



# Phytoplankton Composition and Abundance in Mbiakong River, Cross River Estuary, Niger Delta, Nigeria

G. I. Asuquo<sup>a\*</sup>, I. I. Akpan<sup>a</sup>, U. U. George<sup>b</sup>, I. E. Asuquo<sup>b</sup>,  
J. E. Ukpatu<sup>b</sup> and I. N. Ejiogu<sup>c</sup>

<sup>a</sup> Department of Zoology, Akwa Ibom State University, Nigeria.

<sup>b</sup> Department of Fisheries and Aquaculture, Akwa Ibom State University, Nigeria.

<sup>c</sup> Nigerian Institute of Oceanography and Marine Research, Lagos, Nigeria.

## Authors' contributions

This work was carried out in collaboration among all authors. All authors read and approved the final manuscript.

## Article Information

DOI: 10.9734/AJEE/2022/v19i4424

## Open Peer Review History:

This journal follows the Advanced Open Peer Review policy. Identity of the Reviewers, Editor(s) and additional Reviewers, peer review comments, different versions of the manuscript, comments of the editors, etc are available here: <https://www.sdiarticle5.com/review-history/93237>

Original Research Article

Received 29/09/2022  
Accepted 28/10/2022  
Published 16/12/2022

## ABSTRACT

The phytoplankton composition and abundance in Mbiakong River, Cross river estuary, Niger Delta, Nigeria was studied for a period of one year (March, 2021-February, 2022). Plankton net of mesh size 55µm was used to collect plankton samples from below the water surface, after towing for 5 minutes. The content was emptied into plastic containers and fixed immediately with 4% formalin in the field for preservation. After 48hrs in the laboratory, the preserved plankton samples were concentrated to 10 ml. The concentrated sample was agitated to homogenize before pipetting 1ml sub sample with sample pipette. Enumeration and identification were performed using a zeis inverted microscope at x400 and x 1000 magnification. Species identification was done using recommended keys and guides. A total of 615 individual organisms comprising of 35 species belonging to five taxonomic groups were recorded from Mbiakong River. The most abundant group was the Bacillariophyceae which was represented by 12 species (302 organisms) consisting of 49.11%. This was followed by Chlorophyceae represented by 10 species (199 organisms)

\*Corresponding author: E-mail: ladygwen03@gmail.com;

consisting of 32.36%, Cyanophyceae represented by 12 species (109 organisms) consisting of 17.72%, Euglenophyceae represented by one species (three organisms) consisting of 0.33% and the least abundant was the Dinophyceae represented by one species (two organisms) consisting of 0.14%. The study revealed that species composition and abundance was high in June.

**Keywords:** Abundance; composition; Niger Delta; Nigeria; phytoplankton species; Mbiakong River.

## 1. INTRODUCTION

“Phytoplanktons are tiny aquatic plants, appearing as unicellular, colonial or filamentous forms, with no opposition to currents and are usually drifting or hanging in the open water” [1]. “They are vital water quality indicators due to their short life cycles, and ability to respond to environmental changes, hence, their standing crop and species composition reflects the quality of aquatic health” [2]. “They are the most vital factor for organic matter production in the aquatic ecosystem and are often at the bottom of aquatic food web. Majority of reservoirs usually need a considerable amount of planktons for productive and sustainable fisheries” [3]. “The synergy of physical, chemical and biological properties of water most often results in the production of phytoplankton, while their assemblages are structured by these factors” [1]. “Therefore, any disruptions in these factors may result in alterations of their assemblage which could in turn cause a significant impact on water quality and fishes in the ecosystem” [4].

“Alternations in the abundance and composition of phytoplankton species indicate environmental variables like pH, temperature, nitrate, phosphate total dissolved salt, nutrient levels, and alkalinity are sensitive indicators of pollution when compared with phytoplankton” [5]. “Freshwater phytoplankton communities are necessary guard for environmental changes. They consolidate the effects of increased nutrient loads, and can be more sensitive to the synthesized impacts of stressors than a single stressor” [6]. “Knowledge of phytoplankton population dynamics is essential because temporal and spatial fluctuations in its composition and biomass may be excellent indicators of natural or anthropogenic perturbations in the aquatic ecosystems. The main primary producers of the aquatic environment are phytoplankton which deposits energy to the system by the process of photosynthesis, amalgamating carbon dioxide and water to produce carbohydrates” [7].

Research in abundance and composition of phytoplankton in Mbiakong River is aimed at

providing baseline data to complement existing data and to determine their occurrence in natural conditions for management decisions.

## 2. MATERIALS AND METHODS

### 2.1 Study Area

The study was conducted in Mbiakong River (Fig. 1). Mniakong river lies between latitude  $5^{\circ} 2' 57.84''N$  and longitude  $8^{\circ} 3' 5.04''E$  within the tropical rainforest of Niger Delta region, Nigeria. The Watershed covers an area of approximately 315.9 Km<sup>2</sup>. The area is mostly shaded by overwhelming canopy of riparian vegetation like *Elaeis guinensis*, *Raphia hookeri*, *R. venifera* and other tropical forest trees. Aquatic macrophytes are mainly *Nymphaea*, *Vossia* and *Musanga crinium* sp. Sand dredging has been going on upstream of the river for over two decades. Riparian communities make a living from these activities. However, the consequences of these activities on the environment are enormous.

### 2.2 Data Collection

The study was carried out for a period 12 months (March, 2021 - February, 2022), with sampling done in the morning hours between 8:00 and 10:00 am covering the wet and dry seasons. Plankton net of mesh size 55µm was used to collect plankton samples from below the water surface after towing for 5 minutes. The content was emptied into plastic container and fixed immediately with 4% formalin in the field for preservation [8]. “All samples were taken at ebb tide to reduce tidal and diurnal variation. The samples were transported to the laboratory for analysis. After 48hrs in the laboratory, the preserved plankton samples were concentrated to 10 ml” [9]. Enumeration and identification were performed using a zeis inverted microscope at x400 and x 1000 magnification. Species identification was done using keys in Needham and Needham [10]; as well as guides provided by Newell and Newell [11]; APHA [12] and Egborge [13].

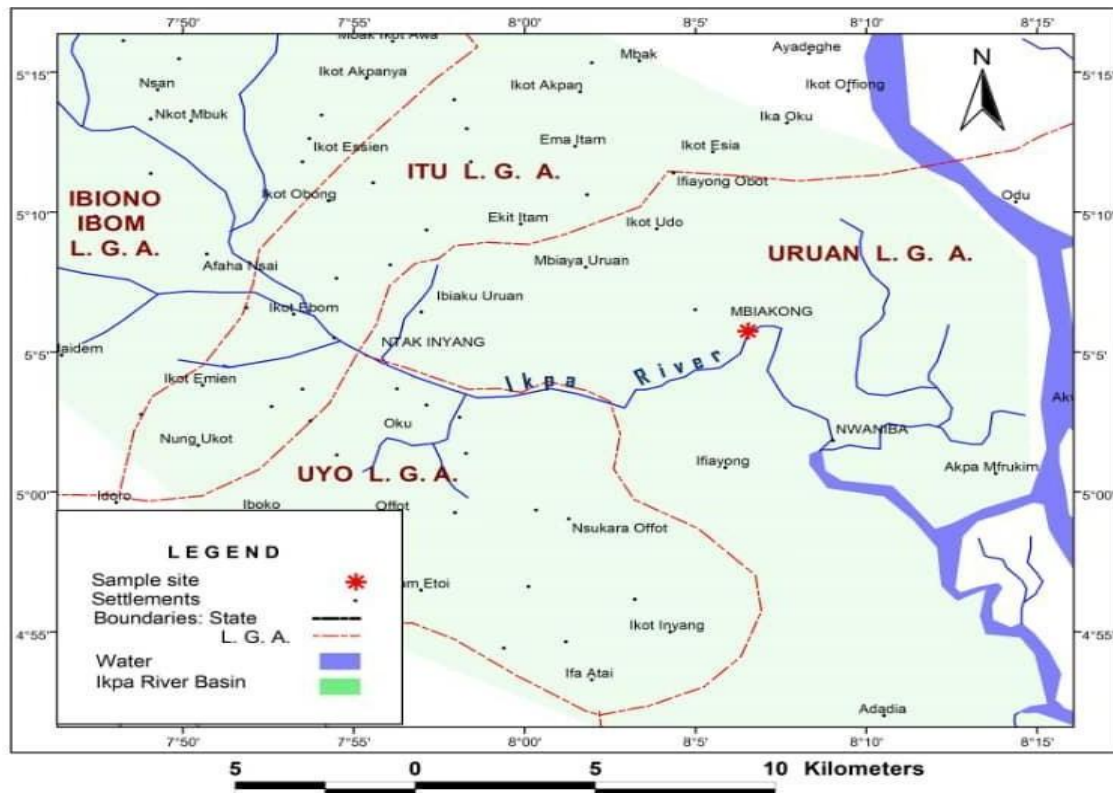


Fig. 1. Map showing Mbiakong River

### 3. RESULTS

The phytoplankton recorded during the study showing a total of 35 species with 615 individuals belonging to five taxonomic groups were recorded from Mbiakong River (Table 1). The most abundant group was the Bacillariophyceae which was represented by 12 species (302 organisms) consisted of 49.11%. This was

followed by Chlorophyceae represented by 10 species (199 organisms) consisted of 32.36%, Cyanophyceae represented by 12 species (109 organisms) consisted of 17.72%, Euglenophyceae represented by 1 species (3 organisms) consisted of 0.33% and the least abundant was the Dinophyceae represented by 1 species (2 organisms) consisted of 0.14% (Table 2 and Fig. 2).

Table 1. Phytoplankton species in Mbiakong River, Niger Delta, Nigeria

SN	Taxa	Code	Total
<b>Bacillariophyceae</b>			
1	<i>Nitzschia sigma</i>	<i>Nit.sig</i>	79
2	<i>Gomphonema accuminatum</i>	<i>Gom.acc</i>	26
3	<i>Diploneis ovalis</i>	<i>Dip.ova</i>	8
4	<i>Gyrosigma attenuatum</i>	<i>Gyr.att</i>	9
5	<i>Melosira granulata</i>	<i>Mel.gra</i>	43
6	<i>Novicula affinis</i>	<i>Nov.aff</i>	35
7	<i>N. gracilis</i>	<i>Nov.gra</i>	11
8	<i>Melosira sigoum</i>	<i>Mel.sig</i>	20
9	<i>Nrtzschia sigmiodae</i>	<i>Nrt.sig</i>	23
10	<i>Nitzschia closterium</i>	<i>Nit.clo</i>	37
11	<i>Tabellaria binalis</i>	<i>Tab.bin</i>	9
12	<i>Tabellaria fenestrata</i>	<i>Tab.fen</i>	2

SN	Taxa	Code	Total
<b>Chlorophyceae</b>			
13	<i>Ulothrix sp</i>	<i>Ulo.sp</i>	16
14	<i>Ankistrodemus spirilliformis</i>	<i>Ank.spi</i>	62
15	<i>Chlamydomonas reticulate</i>	<i>Chla. ret</i>	43
16	<i>Ankistrodesmus acicularis</i>	<i>Ank.aci</i>	10
17	<i>Actinastrum gracilinum</i>	<i>Act.grac</i>	24
18	<i>Schroedenia sp.</i>	<i>Sch.sp</i>	19
19	<i>Scenedesmus quadricauda</i>	<i>Scē.qua</i>	10
20	<i>Euastrum elegans</i>	<i>Eua.ele</i>	13
21	<i>Staurastrum apiculatum</i>	<i>Sta.api</i>	2
<b>Cyanophyceae</b>			
22	<i>Aphanizomenon species</i>	<i>Aph.spe</i>	11
23	<i>Phormidium species</i>	<i>Pho.spe</i>	17
24	<i>Lyngbya limnetica</i>	<i>Lyn.lim</i>	9
25	<i>Oscillatoria limnosa</i>	<i>Osc.lim</i>	7
26	<i>Anabaena circularis</i>	<i>Ana.cir</i>	13
27	<i>Spirulina platensis</i>	<i>Spi.pla</i>	22
28	<i>Lyngbya birgei.</i>	<i>Lyn.bir</i>	13
29	<i>Chroococcus sp.</i>	<i>Chro.sp</i>	10
30	<i>Phormidium cincinnatum</i>	<i>Pho.cin</i>	1
31	<i>Gomphosphaeria aponia</i>	<i>Gom.ap</i>	2
32	<i>Spiriluna major</i>	<i>Dac.aci</i>	3
33	<i>Oscillatoria tenius</i>	<i>Osc.ten</i>	1
<b>Dinophyceae/ euglenophyceae</b>			
34	<i>Peridinium bipes</i>	<i>Per.bip</i>	2
35	<i>Euglena acus</i>	<i>Eug.ac</i>	3
	Taxa/Species		35
	Individuals		615

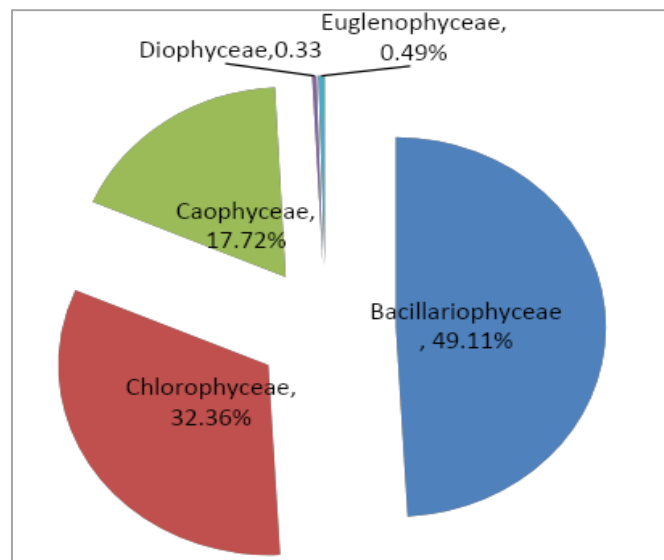


Fig. 2. Relative abundance of phytoplankton species in Mbiakong River

**Table 2. Number and percentage compositions of phytoplankton families in Mbiakong River**

Taxonomic group	Total no. of species	Percentage species composition (%)
Bacillariophyceae	302	49.11
Chlorophyceae	199	32.36
Cyanophyceae	109	17.72
Dinophyceae	2	0.33
Euglenophyceae	3	0.49
Total	615	100

#### 4. DISCUSSION

Thirty-five species belonging to 5 taxonomic groups were recorded in the study area. Similar trends in abundance of phytoplankton groups were also reported by Abowei et al. [14], Ogbuagu et al. [15] and Esenewo et al. [16] in Koluama River, Bayelsa State, Imo River, in Etche Local Government Area, Rivers State, and Nwaniba River, South-South, Nigeria respectively. This result also corroborates with the reported 38 species in Nasarawa reservoir, Yusuf [17], 39 species in Lubara Creek by Abowei et al. [18], 36 species of from the Lagos Lagoon by Nkwoji et al. (2010), 43 species in Sombreiro River by Ezekiel, et al. [19], 45 species from the Lagos Lagoon by Ugbeide and Ugwumba [20], as well as 51 species from Ikpa River, Ekwu and Udo [21].

The result of this study, however, varies considerably from some other studies in Nigeria. Effiong et al. [22] reported 85 species in Eastern Obolo River Estuary. Ogamba et al. [23] reported 143 species in Elechi creek. Davies et al. [5] recorded 169 species in Elechi Creek and Emmanuel and Onyema [24] reported 82 species in Lagos Lagoon. Furthermore, Edogbolu and Aleleye-Wokoma [25] reported "198 species from Ntawogba Creek, Port Harcourt. Phytoplankton abundance is influenced by water temperature, velocity of current, availability of nutrient and light penetration into the water" [19]. "The distribution of phytoplankton in water bodies are not even due to its characteristic patchiness which reduces predator pressure. Phytoplankton show temporal variation in abundance which is influenced by nutrient availability, dynamics in water currents and transparency" [26]. Planktons exhibit high surface area proportional to volume ratio owing to their microscopic nature. This relationship is important as movement is easier in proximity to the surface due to less frictional force between the organism and the water.

The dominance of diatom species such as *Nitzschia sigma* and *Melosira granulata*; green

algae *Ankistrodemus spirilliformis*; blue-green algae *Anabaena circularis* and *Oscillatoria limnosa* strongly showed that the river is eutrophic which an evidence of pollution in the water body. Phytoplankton could be a viable tool both for long term and community based monitoring of reservoirs putting into consideration its inexpensive nature and ease to collect data. Its recommend that a sustainable management plan should be formulated and implemented in order to preserve the reservoirs ecosystem.

#### 5. CONCLUSION

Information about phytoplankton is necessary in understanding the structure and functions of the water bodies; they are important indicators of trophic status of various aquatic biotopes. Appearances of various phytoplanktonic forms indicate good ecological condition of the river. Planktons are ubiquitous. The most characteristic feature is their variability over space and time in aquatic ecosystem. The dominance of diatom species such as *Nitzschia sigma* and *Melosira granulata*; green algae *Ankistrodemus spirilliformis*; blue-green algae *Anabaena circularis* and *Oscillatoria limnosa* strongly showed that the river is eutrophic. Since phytoplankton play a major role in the food chain, it is pertinent to monitor natural and anthropogenic changes in plankton populations. The study therefore recommends the need to create educational awareness to the inhabitants of this study area and the general public on the effects of anthropogenic activities in aquatic ecosystems for a sustainable management and healthy productivity.

#### COMPETING INTERESTS

Authors have declared that no competing interests exist.

#### REFERENCES

- Samuel PO, Adakole JA, Suleiman B. Temporal and spatial physico-chemical

- parameters of River Galma, Zaria, Kaduna State, Nigeria. *Resources and Environment*. 2015;5(4):110-123.
2. Abagai RT, Tiseer FA, Tanimu Y. Seasonal survey in the stream kagoro forest Kaduna, state, Northern Nigeria. *Proceedings of the in and Technology*, June 1-4, 2011, Dogguan, Guangdong province, China. 2011;37-41.
  3. Akpan II. Physico-chemical and biological studies of imo River Estuary, Nigeria, Ph.D Thesis, Department of Fishery, Michael Okpara University of Agriculture, Umudike. 2012;184.
  4. Mustapha A, Nabegu AB. Surface water pollution source identification using principal component analysis and factor analysis in Getsi River, Kano, Nigeria. *Australian Journal of Basic and Applied Sciences*. 2011;5:1507-1512.
  5. Davies OA, Abowei JFN, Tawari CC. Phytoplankton community of Elechi Creek, Niger Delta, Nigeria - A nutrient polluted tropical creek. *American Journal of Applied Sciences*. 2009;6(6):1143-1152.
  6. Sagert S, Rieling TEA, Schubert H. Development of a phytoplankton indicator system for the ecological assessment of brackish coastal water (German Baltic sea coast). *Hydrobiology*. 2008;6(11):91-103.
  7. Hillel N, Geyer S, Licha T, Khayat S, Laronne JB, Siebert C. Water quality and discharge of the Lower Jordan River. *Journal of Hydrology*. 2015;527:1096 – 1105.
  8. Onyema IC. The phytoplankton composition, abundance and temporal variation of a polluted estuarine creek in Lagos Nigeria. *Turkish Journal of Fisheries and Aquatic Science*. 2007; 7:89-96.
  9. Babatunde MM, Shagbo H. Determination of some Physicochemical Parameters of Adeyemo stream a tributary to river Kaduna, Nigeria. *International Journal of Advanced Scientific and Technical Research*. 2015;5(4):565-578.
  10. Needham JG, Needham PR. A guide to the study of fresh water biology. San Francisco: Holding-Day Inc. 1975;1-108.
  11. Newell GB, Newell RC. Marine plankton: A practical guide. Hutchinson and Company Publishers Ltd. London. 1977;229.
  12. American Public Health Association (APHA). Standard methods for examination of water and wastewater. 16th Edition APHA, AWWA, WPCF, Washington D.C. 1985;1268.
  13. Egborge ABM. A preliminary checklist of the phytoplankton of River Oshun. *Freshwater Biology*. 1973;3:569-572.
  14. Abowei JFN, Ezekiel EN, Ogamba EN. Phytoplankton composition and Abundance in Sombreino river, Niger Delta, Nigeria. *Current Research Journal of Biological Sciences*. 2011;. 3(3):229-233.
  15. Ogbuagu DH, Ayoade AA, Chidiago GO. Seasonal variations in physico-chemical regime, bacterioplankton and mycoplankton of Imo River in Etche, Nigeria. *Journal of Microbiology and Biotechnology Research*. 2012;2(2):289-297.
  16. Esenowo IK, Ugwumba AAA, Akpan AU. Evaluating the physico-chemical characteristics and plankton diversity of Nwaniba River, South-South Nigeria. *Asian Journal of Environment & Ecology*. 2017;5(3):1-8.
  17. Yusuf ZH. Phytoplankton as bioindicators of water quality in Nasarawa reservoir, Katsina State Nigeria. *Acta Limnologica Brasiliensia*. 2020;32(4).
  18. Abowei JFN, Tawari CC, Hart AI, Garricks DU. Fin fish species composition, abundance and distribution in the Lower Sombreiro River, Niger Delta, Nigeria. *Int. J. Trop. Agric. Food Sys*. 2008;2(1):46-43.
  19. Ezekiel EN, Hart AI, Abowei JFN. The physical and chemical condition of Sombreiro River, Niger Delta, Nigeria. *Research Journal of Environmental and Earth Sciences*. 2011;3(4):327-340.
  20. Ugbeyide JA, Ugwumba O.A. (Water quality and phytoplankton as indicators of pollution In ibuya river. *British Journal of Environmental Sciences*. 2021;9 (1):26-39.
  21. Ekwu AO, Udo ND. Plankton communities of Ikpa River, South-South Nigeria exposed to sand-dredging activities. *Journal of Fisheries and Aquatic Sciences*. 2014;9(5)345-351.
  22. Effiong KS, Inyang AI, Robert UU. Spatial distribution and diversity of phytoplankton community in Eastern Obolo River Estuary, Niger Delta. *Journal of Oceanography and Marine Science*. 2018;9(1):1-14.
  23. Ogamba EN, Chinda AC, Ekweozor IKE, Onwuteaka JN. Water quality and phytoplankton distribution in Elechi Creek Complex of the Niger Delta. *J. Nigerian Environ. Soc, (JNES)*. 2004;1(2):121-130.
  24. Onyema IC. The phytoplankton composition, abundance and temporal

- variation of a polluted estuarine creek in Lagos Nigeria. Turkish Journal of Fisheries and Aquatic Science. 2007;7:89-96.
25. Edogbolu AJ, Aleleye-Wokoma IP. Seasonal variations in phytoplankton composition and physicochemical properties of Ntawoba Creek, Port Harcourt, Nigeria; 2007.
26. Sharma NK, Bhardwaj S. An assessment of seasonal variation in phytoplankton community of Mahi River (India). Geneconserve. 2011;10 (40):154-164.

© 2022 Asuquo et al.; This is an Open Access article distributed under the terms of the Creative Commons Attribution License (<http://creativecommons.org/licenses/by/4.0>), which permits unrestricted use, distribution, and reproduction in any medium, provided the original work is properly cited.

*Peer-review history:*

*The peer review history for this paper can be accessed here:*  
<https://www.sdiarticle5.com/review-history/93237>