

Impact of Leachate on Physicochemical Properties of Soil, Within the Vicinity of Oghara Medical Dumpsite, Delta State Nigeria

P. O. Nwaka¹, B. Anegebe^{2*}, O. Adeniyi¹, I. G. Okunzuwa¹ and A. Jidonwo¹

¹*Department of Chemistry, Faculty of Physical Sciences, University of Benin, PMB 1154, Benin City, Nigeria.*

²*Department of Basic and Industrial Chemistry, Western Delta University, P.M.B. 10, Oghara, Delta State, Nigeria.*

Authors' contributions

This work was carried out in collaboration between all authors. Authors PON, BA and AJ designed the study, performed the statistical analysis, wrote the protocol, and wrote the first draft of the manuscript. Authors OA and IGO managed the analyses of the study. Authors PON and BA managed the literature searches. All authors read and approved the final manuscript.

Article Information

DOI: 10.9734/PSIJ/2018/37470

Editor(s):

- (1) Pratima Parashar Pandey, Professor, Polymer Composites, Nanotechnology Applied Sciences, College of Engineering & Technology, Integrated Institutes of Learning, Dr. APJ Abdul Kalam Technical University, Greater Noida, India.
(2) Christian Brosseau, Distinguished Professor, Department of Physics, Université de Bretagne Occidentale, France.

Reviewers:

- (1) Eyankware Moses Oghenenyoreme, Ebonyi State University, Nigeria.
(2) B. P. Naveen, Amity University Gurgaon, India.

Complete Peer review History: <http://www.sciencedomain.org/review-history/22828>

Original Research Article

Received 18th August 2017
Accepted 11th November 2017
Published 23rd January 2018

ABSTRACT

Assessing the level of toxic metals in pollution prone areas is imperative in order to ascertain their present levels. Top soil TS (0-15 cm) and sub soil SS (15-30 cm) samples and leachate were obtained in Oghara Teaching Hospital dumpsite. Three locations in the dumpsite were sampled. The soil and leachate was characterized using standard methods. The results shows that the pH was acidic with a range value of 4.26-5.48, electrical conductivity EC (29-197) $\mu\text{s}/\text{cm}$, cation exchange capacity CEC (11.58-25.10) meq/100g, nitrogen N (0.21-0.49) %, organic matter O.M (3.77-9.18) %, organic carbon O.C (2.18-5.31) %, SO_4^{2-} (5.66-29.53) meq/100 g, PO_4^{3-} (5.07-54.29) meq/100 g, Clay (13.60-17.62) %, Silt (2.21-2.99) % and Sand (79.86-84.13) %. The soil samples contain elevated levels of heavy metals with iron having the highest concentration. The metal concentrations are; 3328.50-6569.40, 117.70-267.70, 49.38-205.76, 11.63-87.21, 1.50-5.45 and

*Corresponding author: E-mail: balaanegbe@yahoo.com;

10.29-18.57 mg/kg for Fe, Zn, Mn, Cu, Cd and Pb respectively. The fractionation results follows the order B1 > R > B2 > B3. The mobility factor was high which is an indication of mobile nature of these metals, with lead (Pb) being the least mobile metal. The result of the leachate characterization are; pH (5.9), total dissolve solids TDS (32 mg/l), total suspended solids TSS (3700 mg/l), dissolve oxygen DO (1.40 mg/l), biological oxygen demand BOD (84 mg/l), chemical oxygen demand COD (214 mg/l), Ca²⁺ (62.20 mg/l) and Mg²⁺ (28.00 mg/l). This research is an eye opener to the indiscriminate dumping of hospital waste, as these can be a major source of heavy metals pollution if not properly checked.

Keywords: Physico-chemical; hospital dumpsite; leachate and heavy metals.

1. INTRODUCTION

The unsightly accumulation of wastes generally affects the aesthetic value of the urban environment, destroy the land scape and to an extent pulsate the environment. It also increases the breeding conditions of some disease vectors and pathogens which invariably increases the morbidity (malaria, dysentery and diarrhea) and mortality [1] as well as the cost of medical expenditure among the local residents [2]. Generally, the practices at dumpsites are not effective. Dumping is unrestricted to industrial, agricultural, domestic and medical wastes and up in one site. As a result of poor control, medical and hazardous wastes end up at municipal dumpsites even though they have their own special dumping areas. The uncontrolled manner in which solid waste is disposed off at most hospital dumpsites creates serious environmental degradation. Hospital wastes refers to all waste, biological or non biological from hospitals, that is discarded and not intended for further use and these include: pathological, infectious, hazardous chemicals, radioactive wastes, stock cultures, blood and blood products, animal carcasses, pharmaceutical wastes, pressurized containers, batteries, plastics, low level radioactive wastes, disposable needles, syringes, scal-pels and other sharp items. These are in addition to food wastes, clinical bandages, gauze, cotton and other miscellaneous wastes. Other types of waste include toxic chemicals, cytotoxic drugs, flammable and radio-active wastes that can often be considered infectious [3]. Hospital wastes are generated as a result of patients' diagnosis and/or treatment or immunization of human beings or animals. Hospital wastes are a universal set having subsets like infectious and hazardous wastes. Wrongly managed hospitals wastes can result in severe health hazards. It has been reported that hospital waste is one of the most toxic Waste [4]. Countries with little or

no proper hospital waste management are prone to severe chronic respiratory syndrome (SARS). Several accidents have been reported where mishandling of hospital wastes led to infections [5]. Hospital wastes are so infectious / hazardous that every means of improper disposal pose a threat to the environments. Studies so far in Nigeria have revealed a zero level of proper management of hospital wastes, in spite of the risk associated with this knowledge gap [6]. The uncontrolled manner in which hospital waste is disposed off at most hospital dumpsites creates serious environmental degradation. The inadequate waste disposal translates into economic and other welfare issues [7]. Leachate from hospital waste dumpsite can decompose and also increase in volume if exposed to rainfall. Leachates have the potential of polluting ground water. Consequently due to the above situation in developing countries such as Nigeria, it becomes imperative to evaluate the effect of hospital waste on soil physico-chemical properties and heavy metal content in Delta State Teaching Hospital Dumpsite Oghara.

2. MATERIALS AND METHODS

2.1 Study Area

The study area is Oghara, a town in Ethiopia West Local Government Area of Delta State, Nigeria, and is located between latitude 5035'1"N and longitude 5051'16"E. The city has road intersections connecting Sapele to Warri and Benin. It has various educational Institutions such as the Delta State Polytechnic in Otefe-Oghara, Western Delta University and Delta State University Teaching Hospital (DELSUTH). This teaching hospital has a dump site where all their wastes are dumped untreated. This makes it a point source of concern. Table 1 show the coordinate of the dumpsite and the control site which is 100 m away from the dumpsite. Fig. 1 shows the map of Oghara with sampling points.

2.2 Sample Collection and Preparation

Composite soil samples were collected at a depth of 0-15 and 15-30 cm from the hospital dumpsite in Oghara using standard soil (hand) auger. Three different locations, was chosen from the dump site. Soil samples of control site were also collected. The geographical position coordinates of the sampled locations were identified and mapped using global position system (GPS). The collected samples were transferred into a black polythene bag, properly labeled and transported to laboratory. The samples were air-dried for a period of two weeks in a well-ventilated space. The dried representative soil samples were crushed in porcelain mortar and sieved through 2 mm (10 mesh) stainless sieve. The air-dried <2 mm soil samples were stored in airtight polythene bags and labelled prior to analysis. Since the dumpsite was not equipped with a leachate collector, the leachate was collected at the base of the dumpsite and was sampled randomly from three different locations and mixed. The leachate sample was transferred immediately to the lab and stored in the refrigerator.

2.3 Determination of Physico-Chemical Properties of Soil

2.3.1 pH

Twenty grams of the soil sample was weighed into a 50mL beaker and 20 mL of distilled water was added. The soil/water mixture (ratio 1:1) was allowed to stand for 30 mins and stirred occasionally with a glass rod. The pH meter was calibrated using buffer 4 and 7. The electrodes were rinsed and subsequently immersed into the soil/water mixture. The pH was recorded [8].

2.3.2 Cation exchange capacity

Five grams of soil sample was weighed into a 250 mL polypropylene bottle and 100 mL of 1M NH₄OAc solution was added and stoppered. The mixture was shaken for 30 mins in a mechanical shaker (Heldoph) at 200 rpm for 30 mins. The supernatant was filtered through Whatman No.1 filter paper. The concentration of K⁺, Na⁺, Mg²⁺ and Ca²⁺ in the extract were determined as described by [9].

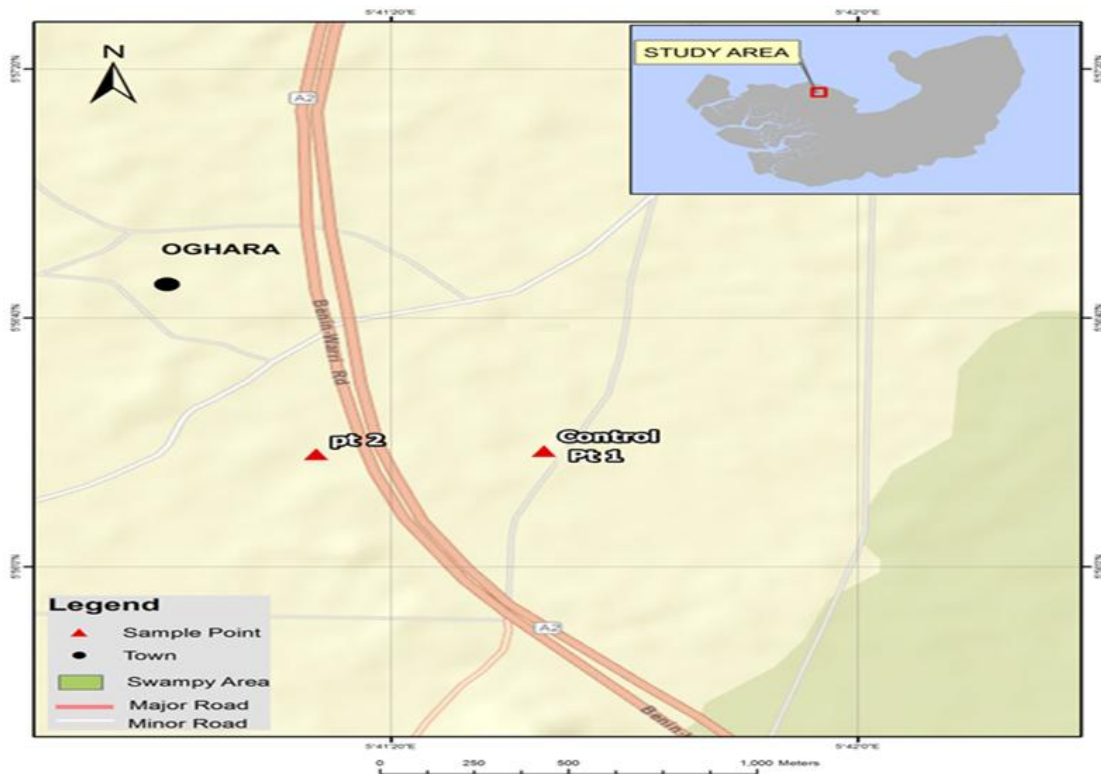


Fig. 1. Map of Oghara City showing sampled sites

Table 1. Site code, Coordinates and Site Description

Location	Coordinates	Site description
Control site	5 ⁰ 56' 18.61"N, 5 ⁰ 41' 33.22"E	The site is located at Ogharefe ,Ogini road. It is characterized by residential buildings.
Hospital Waste Dumpsite	5 ⁰ 56' 40.56"N, 5 ⁰ 41' 13.52"E	The site is located at Ajmuyawve area closed to Oghara junction. It is characterized by ariable lands.

2.4 Particle Size Analysis - Hydrometer Method

Fifty grams of soil sample were weighed into a 250 mL beaker, 100 mL of distilled water and 10 mL of concentrated H₂O₂ were added to the soil. The content of the beaker was heated until frothing stopped. The mixture was cooled and transferred into shaking bottles. 20 mL of sodium hexametaphosphate solution was added and the mixture was shaken for 1 hr. The suspension was transferred to 1 L sedimentation cylinder and brought to mark with distilled water. A plunger was used to agitate the suspension. The hydrometer was then lowered into the suspension and its reading was taken after 40 seconds. The temperature was noted. The first reading, R₁, gave the percent clay and silt. The suspension was allowed to stand for 2 hrs before the hydrometer reading was taken again. The second reading, R₂, gave the percent clay [10].

The method describe by [11] was used to determine the organic carbon content. The concentration of phosphorus was obtained as described by [12]. The nitrogen content was determined by colorimetric method [10]. Sulphate-Sulphur (SO₄²⁻) was determined as described by [13]. The total metal content was determined as described by [14]. The leachate was characterized using standard methods for the examination of water and waste water describe by [15].

3. RESULTS AND DISCUSSION

The results of the physico-chemical properties of the soil from hospital dumpsite in Oghara, along with the control are presented in Table 2. Soil pH is the most widely accepted parameter which exerts a controlling influence on the availability of micro-nutrients and heavy metals in the soil to plants [16]. The pH of the soils from the hospital dump site ranged 4.26-5.48, this was higher than the value reported by [17, who reported a pH of 8.9. The pH of the Hospital dumpsite was acidic (Table 2) which may be as a result of the nature

of waste such as infectious waste (suspected to harbour pathogens), pathological waste (human tissues or fluid), sharps (needles and scalpels), pharmaceutical waste (drugs which are no longer needed or expired), genotoxic waste (substances with genotoxic properties e.g cancer drugs), chemical waste (laboratory reagents), waste with high content of heavy metals (broken thermometers and blood pressure gauges), pressurized containers (gas cylinders/aerosol canisters) and radioactive waste such as unused liquids from radiotherapy [18]. The pH of the dump site was found to be more acidic than that obtained from the control soils which has 6.55 and 6.65 for top soil (0-15 cm) and sub soil (sub soil). The acidity of the soil in the studied site decreased with depth. This acidic top soil may be as a result of the presence of this hospital waste in the top soil which gradually leaches down the soil due to the sandy nature of the soil. Soil electrical conductivity (EC) is a measure of the amount of salts in soil (salinity of soil) [19]. Electrical conductivity values ranged from 29-197 μscm^{-1} for hospital dump sites. The EC values for the hospital dump sites were found to decrease from top soil to sub soil. However the sub soil value was higher in the control site and the value was very low when compared to the hospital dump sites (Table 2). This could be as a result of the waste (needles, scalpels, broken thermometers and blood pressure gauges) present on the top soils which contributed to high EC values. Similar range of values has been reported by [20,21]. However these values are higher than the values reported by [22-24]. The high conductivity may also be attributed to the availability of a high amount of metal substances, in the dump sites whose content are eventually leached into the underlying soils and hence led to an increase in the concentration of some ions such as sodium, calcium, aluminum and hydrogen in the soils. Electrical conductivity is an important indicator of soil health. It affects crop yields, crop suitability, plant nutrient availability, and activity of soil microorganisms which influence key soil processes including the emission of greenhouse gases such as nitrogen

oxides, methane, and carbon dioxide. Excess salts hinder plant growth by affecting the soil-water balance [19]. For certain non-saline soils, determining EC can be a convenient and economical way to estimate the amount of nitrogen (N) available for plant growth [25,26]. According to Hazelton and Murphy [26], the soil CEC is a measure of the negative site of the soil colloid in which the positive charge cation act on. The cation exchange capacity (CEC) is a direct contribution from the clay and organic matter contents of soil. Soil CEC is also known as a good indicator for evaluating soil fertility. The cation exchange capacity (CEC) is the number of moles of positive charge adsorbed per unit mass. In this study, the CEC values were low with a range of 11.58-25.10 meq/100 g (Table 2). The low values were attributed to high sandy nature of the soil, a soil low in CEC content but high in sand is susceptible to high leaching because the retention power of heavy metals in its soil is low [27,8]. The CEC was very high in the hospital dump site soils compared with the control (4.61-5.46 meq/100 g). This is logical following the high organic matter content determined in the impacted area which resulted in increased exchange sites for the base metals (K, Na, Ca, Mg). This is as a result of high organic matter content such as pathological waste (human tissues or fluids) present in the hospital dumpsite, the interaction between the organic and these base metals prevent them from leaching, hence higher value when compared to control which has low organic matter content. The Nitrogen content, organic matter, organic carbon content, sulphate and phosphates content ranged from 0.21-0.49%, 3.77-9.18%, 2.18-5.31%, 5.66-29.53 mg/kg and 5.07-54.29 mg/kg respectively for hospital dump sites. These values were low when compared to control site and also lower than the values reported by [26]. The presence of organic carbons indicates some microbial activities in the dumpsite soil. In addition the organic carbon, nitrogen, phosphorus, EC, sulphate level were found to have direct relationship with pH, and these parameters decrease as the pH decreases, and this is in agreement with [27,28]. From the textural analysis, the Hospital site and control soils have low clay and silt content and a high sand fraction (79.86-89.47 %). The silt and clay fractions ranged from 2.15-4.41 and 8.18-17.62% respectively. In general, all soil examined contained less than 23% clay. The soil texture plays an important role in mobility of metals in soil [19]. Texture reflects the particle size distribution of the soil and thus the content

of fine particles like oxides and clay. These compounds are important adsorption media for heavy metals in soils. The clay soil retains high amount of metals when compared to sandy soil. Thus it is predictable that the dump site soil and the control site under investigation are susceptible to leaching. These results indicate that hospital waste had a significant effect on all the soil properties. Generally, the hospital waste increased the values for soil pH, CEC, EC, organic matter and total nitrogen when compared to control (uncontaminated soil). This is attributable to the decomposition and mineralization of the biodegradable solid wastes in the site leading to the release of minerals as well as basic cations into the soil which caused increases in soil physicochemical properties [26].

The results of heavy metals in the hospital dumpsite are presented in Table 3. The results showed that the heavy metals were generally higher in the top soils (0-15) cm than the sub soils (15-30) cm. This is probably because the top soil is the point of contact. Previous studies have shown that surface soils are better indicators of metallic burdens [29,30]. The heavy metals from the hospital dumpsite were significantly higher than the levels observed in the control sites. [31] reported that the concentration of metals in soils at the decomposed biodegradable waste dumpsite and 100 m away (control site) from dumpsite indicated that there is a relative increase in the concentration of heavy metal at dumpsites compared to those in soils at 100 m away (control site) from the dumpsite. This is in agreement with the present study. This could be attributed to the availability of metals containing wastes at dumpsite (especially hospital dump site) which eventually leached into the underlying soils. The metals considered in this study include the metals which are micro-nutrient such as iron (Fe), zinc (Zn), manganese (Mn) and copper (Cu) and the non-essential/toxic heavy metal such as cadmium (Cd) and lead (Pb) which are toxic to plant when present in the soil at concentrations above tolerance level. From the results obtained, the concentration of lead at dumpsite ranged from 10.29-18.57 mg/kg for hospital dump site (Table 3) and the control site has 1.00 mg/kg for TS and 1.04 mg/kg for SS. The values recorded in this study was far below the 143.80 mg/kg reported by [32], in soils around a hospital waste incinerator bottom ash dumps site. Since lead is a cumulative pollutant, the pollution of soil by lead remains a very serious problem that should be given much

attention by environmental chemists in collaboration with government agencies. Also, effort should be made to educate the public on the health effects of this metal when ingested in excess. Such effects which include damage of the brain, kidney, miscarriage in pregnant women and damage of sperm production organ in male [33]. From this study, iron concentration in the hospital dumpsite varied between 3328.5-6569.4 mg/kg (Table 3). Those were far above the value reported by [34]. The control soil has a concentration of 771 mg/kg for TS and 759 mg/kg for SS (Table 3). Studies carried out by [35], revealed results that are comparable to the one obtained in this study. [36], suggested that any pollution of the environment by iron cannot be conclusively linked to waste materials alone but other natural sources of iron must be taken into consideration. Despite the fact that iron is a micro nutrient, it should be properly monitored to maintain its concentration in the accepted range to avoid health defect caused by the deficiency or excess amount of it. The cadmium level at the hospital dumpsite (Table 3) varied between 1.50-5.45 mg/kg. The level of Cd was below detection limit in the control site. The levels of Cd recorded in the hospital dumpsite are particularly worrisome since Cd has no any nutritional value. Cadmium was listed by [37] as one of the 129 priority pollutants and among the 25 hazardous substances. Ingestion of high level of cadmium severely irritates the stomach leading to vomiting and diarrhoea. The level of cadmium in this study when compared to the mean value of 7.54 mg/kg reported by [32] was low. The concentration of zinc in soils was obtained to range from 117.70-267.70 mg/kg for hospital dumpsite. These values were found to be higher than 69.11 mg/kg reported by [3]. [38], obtained a range of 100.80 to 226.00 mg/kg, which is in agreement with the values obtained in the hospital dumpsite in Oghara town. The intervention value for copper in soil is 190 mg/kg [39], whereas the concentration range between 11.63-87.21 mg/kg for hospital dumpsite. Both the dumpsite and control site concentration of copper within the study area falls below the DPR intervention value. World Health Organization [40] stated that, the injection of copper can lead to severe muscular irritation, nausea, vomiting, diarrhea, intestinal cramps, severe gastrointestinal irritation, and other dangerous health defects. Mn in this study has a range of 49.38-205.76 mg/kg for hospital dump site. The control has a value of 7.58 and 8.23 mg/kg for top soil and sub soil (Table 3). In general the TS has higher concentration of these metals than the SS,

however the concentration of Fe and Cu in location 1 of hospital dumpsite was found to be higher in sub soil than top soil. This could be attributed to the evidence from molecular spectroscopy that heavy metals form strong bonds with specific functional groups of humic substances (HSs) from the organic matter contaminants (OCs), carboxylate (-COO⁻), phenolic and sulphur-hydryl (-SH) functional groups [41,42]. These may also be as a result of heavy metal-ligand complex formation and competition to destabilize it and forming of new complexes with the heavy metal cation [43,44]. In general it was observed from this study that all the heavy metals have higher concentrations in the dump site compare to control (Table 3).

3.1 Fractionation of Heavy Metals in the Hospital Dumpsite

The sequential extraction scheme is a very useful tool in assessing the mobility and bioavailability of the heavy metals in soils. The distribution of heavy metals in the samples allows us to predict their mobility, bioavailability and toxicity [19]. Fractionation of total metal contents may give indications of the origin of the metals. High levels in the exchangeable, acid soluble and reducible may indicate pollution from anthropogenic origin and even high contents in the resistant fractions except the residual fraction may be significant in the long term [19].

The fractionation results reveal that metals in the control site were mainly in the residual fraction, with a range of 33.75-70.00 mg/kg (Fig. 2). Association of these metals in the residual fraction does not generally constitute an environmental risk. This is due to the stable nature of the compound and the fact that the metals are bonded firmly within a mineral lattice that restricts the availability of this metal [45, 19]. Pb, was not found in fraction B1 (labile fraction), which means it will not be available for plant uptake at the control site. The B1 fraction of all the metals had high concentrations (Fig. 2) with a range of 31-58 %, 33-45 % and 28-40 % for location 1, 2 and 3 respectively. The high concentration of these metals in these fraction when compare to the control site (0.00-9.04 mg/kg) pose serious environmental problem to the underground water [8]. Also the high concentrations indicate that the metal is of anthropogenic origin and readily available for plant uptake. The concentration in the residual fractions in the three locations ranged 20.40-36.36 %. The residual fraction is considered the

Table 2. Physico-chemical properties of the examined soils in the hospital dumpsite along with the control

Sites	Location	Depth (cm)	pH	EC ($\mu\text{s}/\text{cm}$)	Ca (meq/100g)	Mg (meq/100g)	Na (meq/100g)	K (meq/100g)	CEC (meq/100g)	N (%)	O.M (%)	O.C (%)	SO ₄ ²⁻ (meq/100g)	PO ₄ ³⁻ (meq/100g)	Clay(%)	Silt(%)	Sand (%)
Hospital Dumpsite	Location one	0-15	4.55	60	13.23	3.80	1.43	2.51	20.97	0.23	4.15	2.40	27.51	41.60	15.21	2.99	81.80
		15-30	4.65	29	14.92	4.19	2.28	3.16	24.55	0.49	9.18	5.31	29.53	23.75	16.26	2.67	81.07
	Location two	0-15	4.26	101	8.66	0.81	0.91	1.20	11.58	0.21	3.77	2.18	24.28	54.29	13.60	2.26	84.13
		15-30	5.40	45	10.58	0.81	0.99	1.32	13.70	0.30	5.36	3.10	17.77	50.88	14.50	2.15	83.35
	Location three	0-15	5.48	197	13.62	3.89	2.33	2.86	22.70	0.42	7.52	4.35	5.66	5.10	16.72	2.21	81.07
		15-30	5.45	166	15.10	4.86	2.21	2.93	25.10	0.48	8.96	5.18	16.79	5.07	17.62	2.52	79.86
Control site	Control	0-15	6.55	7.00	1.76	1.62	0.89	0.34	4.61	0.09	0.78	0.45	16.99	8.82	8.18	2.35	89.47
	Location	15-30	6.65	17.00	3.17	0.64	1.10	0.54	5.46	0.05	0.50	0.29	17.19	8.74	13.15	4.41	82.44

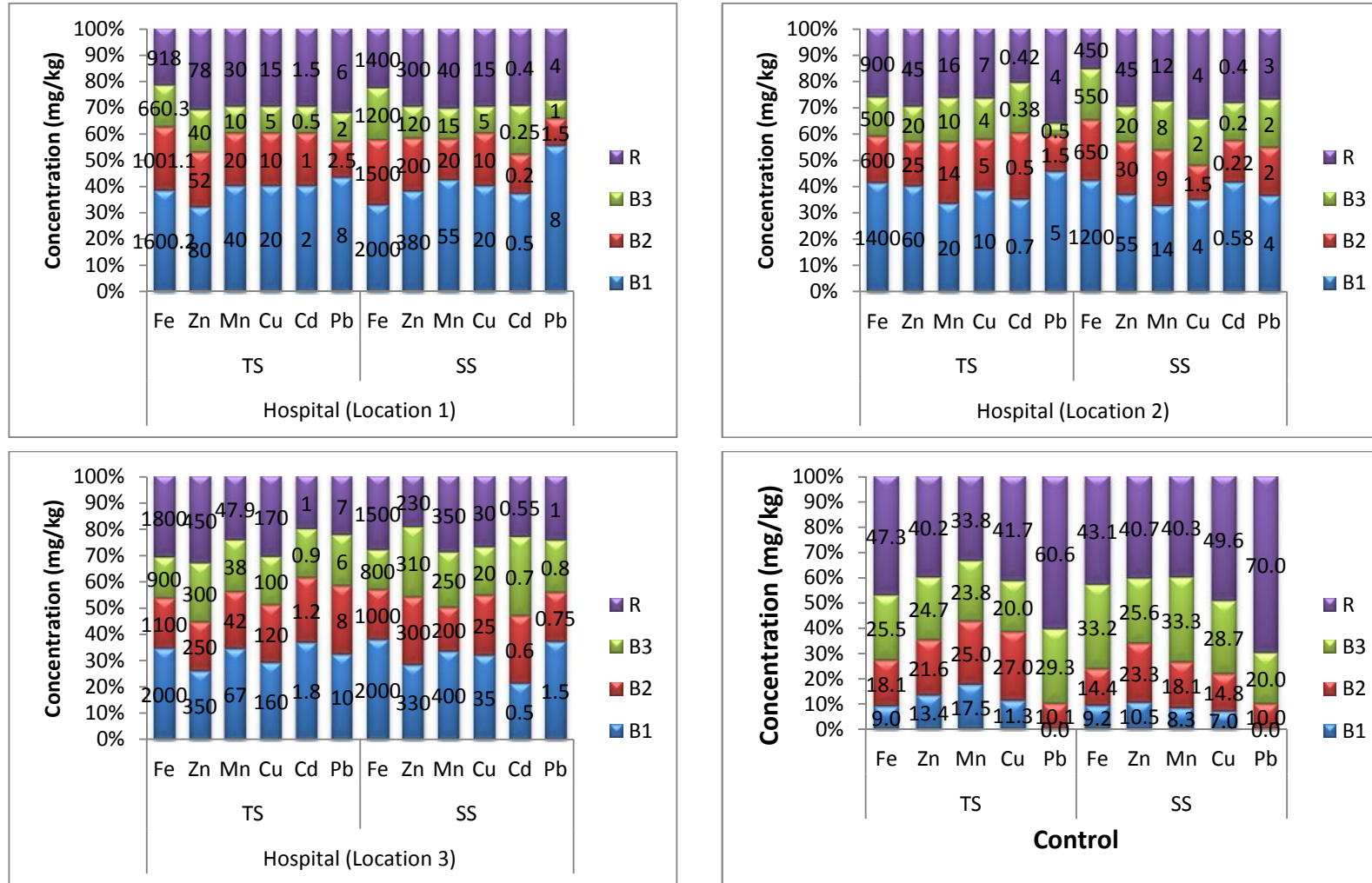


Fig. 2. Fractionation and distribution of metals

Table 3. Heavy metals of the examined soils in the hospital dump site along with the control

Site	Location	Depth(cm)	Fe (mg/kg)	Zn (mg/kg)	Mn (mg/kg)	Cu (mg/kg)	Cd (mg/kg)	Pb (mg/kg)
Hospitals	Location 1	(0-15)	4379.6	267.7	107	52.33	2.4	18.57
		(15-30)	6569.4	117.7	139.92	58.14	1.5	15
	Location 2	(0-15)	3457.88	153.1	61.73	29.07	2.25	11.43
		(15-30)	3328.5	153.1	49.38	11.63	1.5	11.43
	Location 3	(0-15)	5824.9	160.0	205.76	87.21	5.45	12.56
		(15-30)	5386.91	135.0	189.45	56.28	2.5	10.29
Control	Location	(0-15)	771	10.2	8.23	11.63	0	1
		(15-30)	759	9.5	7.58	11.63	0	1.04

most stable, less reactive and less bioavailable since it is occluded within the crystal lattice layer of silicates and well crystallized oxide minerals [45, 14]. The fraction can be taken as a guide to the degree of pollution of the soil. The smaller the percentages of the metal present in this fraction, the greater the pollution of the area [46]. Fraction B₂ and B₃ could be considered relatively stable, slowly mobile and poorly available but could change with variations in redox conditions. It may become more soluble under reducing conditions and less so under oxidizing ones [46].

3.2 Recovering Factor

The efficiency of the BCR sequential extraction scheme was measured by comparing the total metal concentration obtained with their pseudo total concentrations. This approach furnished percent recoveries, (R_f). Recoveries sequential extractions were within the range of 85-100 % of pseudo total metal concentrations of Mn, Cu, Fe, Cd, Pb and Zn respectively, suggesting that both methods extracted similar concentrations of heavy metals from the soil. These results are similar to other studies where the sum of fractions were within ±15 and ±13 [47,19] of the total metal concentrations by hot acid digestions. These results indicate good agreement with the BCR chemical fractionation and HNO₃-HCl extraction method. The cumulative error in the sequential extraction procedure was reasonably low. Loss of solid material in the decanted supernatant, efficiency of individual extractants, sampling and analytical variability may have contributed to the differences between metal concentrations by sum of fractions and pseudo total metal concentration.

3.3 Mobility Factor

Since fraction B₁ represents the first three fractions in the modified Tessier et al. [48]. sequential extraction viz: water-acid soluble, exchangeable, and carbonate bound [19], the relative index of metal mobility called mobility factor, M_f a measure of the potential mobility [49], was calculated from the BCR sequential extraction data using the expression:

$$M_f = \left(\frac{B_1}{B_1+B_2+B_3+R} \right) \times 100 \quad (1)$$

The M_f for the metals in different locations did not follow a particular pattern with respect to increasing depth (Table 5). The mobility factors in all the sites were high. High M_f indicates that they originate from anthropogenic sources and interpret the relative high lability and biological availability of the heavy metal in soil [49,50].

3.4 Physico-chemical Analysis of Leachate Samples

The leachate generated at bottom of the dumpsite carries numerous contaminants to the soil surface and to adjacent areas. During percolation of leachate through the soil, leachate undergoes various processes such as physicochemical decomposition process, ion exchange reactions, chemical alterations, oxidation, hydrolysis etc. These reactions alter the soil original properties.

The pH value for the leachate from the hospital dumpsite was 5.2. The FEPA and EPA [51,52] recommended values for pH in water are 6-9 and 6-8.5, respectively. The acidity of the entire sample in hospital dumpsite was below EPA

standard and this observed result could be as a result of moderate amount of acidic carbonate (H_2CO_3 and HCO_3^-) containing minerals being washed into the soil. The total dissolved solids (TDS) and total suspended solids (TSS) was in the range of 32 and 3700 mg/l respectively. The low level of TDS could be attributed to the fact that low amount of soluble anions and cations were present in the samples [53]. The BOD and COD of hospital waste dumpsite were in the range of 84 mg/l and 214 mg/l respectively. High values of chemical oxygen demand (COD) and biochemical oxygen demand (BOD) was an indication of polluted water and signifies the presence of organic, inorganic and oxygen demanding pollutants in the samples. The COD values of the hospital waste dumpsite sample was within the standards and this could be due

to the presence of low quantity of oxygen demanding pollutants [54,55] or because the usage of oxygen by the organisms during decomposition in the sample is balanced. The dissolved oxygen (DO) level of all the samples were not within the FEPA and EPA standards and this shows that the samples have low DO that could not support the activities of the aquatic organisms in the environment [53]. The BOD levels in the sample were higher than EPA and FEPA standard. The high level of BOD could be attributed to high level of organic pollutant in the sample and it implies that the sample is polluted. This could be possibly because of low concentration of causing matter such as decaying plants or animal [56]. Possible sources of magnesium in the sample sources are due to deposits of magnesite,

Table 4. Recovering factor for metals (%)

	Location	Depth(cm)	Fe	Zn	Mn	Cu	Cd	Pb
Hospital Dumpsite	Location 1	0-15	95.43	93.39	93.46	95.55	92.59	99.62
		15-30	92.85	98.26	92.91	86.00	90.00	96.67
	Location 2	0-15	98.27	97.98	93.46	89.44	88.89	96.24
		15-30	85.62	97.98	97.20	98.88	93.33	96.24
	Location 3	0-15	99.57	98.40	94.72	93.66	89.91	94.34
		15-30	98.39	98.78	97.53	94.60	94.00	94.41
Control Site		0-15	96.08	95.10	97.21	98.88	00.00	99.00
		15-30	91.30	90.53	94.99	98.90	00.00	96.15

Table 5. Mobility factor (M_f) of metals in the hospital dumpsite and control site

		Depth(cm)	Fe(%)	Zn(%)	Mn(%)	Cu(%)	Cd(%)	Pb(%)
Hospital Dumpsite	Location 1	0-15	38.29	32.00	40.00	40.00	40.00	43.24
		15-30	32.79	38.00	42.31	40.00	37.04	55.17
	Location 2	0-15	41.18	40.00	33.33	38.46	35.00	45.45
		15-30	42.11	36.67	32.56	34.78	41.43	36.36
	Location 3	0-15	34.48	25.93	34.38	29.09	36.73	32.26
		15-30	37.74	28.21	33.33	31.82	21.28	37.04
Control		0-15	9.04	13.40	17.50	11.30	00.00	0.00
		15-30	9.23	10.47	8.33	6.96	00.00	0.00

Table 6. Physico-chemical Properties of Leachate obtained from the Hospital Dumpsite along with EPA and FEPA Standard

S/N	Parameters(mg/l)	Leachate from hospital waste	EPA standard(2009)	FEPA standard(1991)
1	P^H	5.2	6.00-8.50	6.00-9.00
2	TDS	32	500	2000
3	TSS	3700	NS	NS
4	DO	1.40	6.00-8.00	5.00
5	BOD	84	4.00	50
6	COD	214	250	80
7	Ca^+	62.20	75	200
8	Mg^+	28.00	30	20

dolomite among other salts in the area. These salts can be washed or leached from the soil and subsequently ends up in water [57]. The Mg level in the hospital waste dumpsite is 28 mg/l. Calcium is 62.20 mg/l. Low concentration of calcium in the samples could be attributed to low present of calcium chloride and magnesium chloride in the soil. It could also be attributed to low accumulation of bones of dead animals in the source samples. Up to 75 mg/L of calcium was recommended by EPA probably because calcium is a major mineral used in mineralization of bones and shells [58].

4. CONCLUSION

The results showed elevated levels of the metals under investigation. The soil from the three locations has significant percentage of extractable metals associated with the non-residual fractions. This indicates that these metals could potentially be remobilized into the soil solutions and then be leached down the soil profiles for further transportation to other environmental compartments, particular ground and surface water environments. The relatively high mobility factor of most of the metals confirms the high liability and biological availability of these metals in some of the studied sites.

COMPETING INTERESTS

Authors have declared that no competing interests exist.

REFERENCES

1. Civeria AC, Lavado MO. Foreign materials and top soils; test of soil toxicity on boreholes, detrimental effects: Physical Properties, Structural Stability and Water Retention; 2008.
2. Ejeona UU, Umah NO. Investigation on environmental hazard in Onitsha physico-chemical properties of soil: Soil contamination density, caused by dumpsites. *International Journal of Engineering and Applied Sciences*. 2000; 6:1-10.
3. Auta T, Morenikeji OA. Heavy metal concentrations around a hospital incinerator and a municipal dumpsite in Ibadan City, South-West Nigeria. *J. Appl. Sci. Environ. Manage*. 2013;17(3):419-422.
4. Inyang EP, Akpan I, Obiajunwa EI. Investigation of soils affected by burnt hospital wastes in Nigeria using PIXE. *Springerplus*. 2: 208. Published online 2013 May 7. DOI: 10.1186/2193-1801-2-208
5. Shang HY, Jia HQ. Present situation and disposal of medical wastes in China. *J Environ Pollut Control*. 2002;24:1001–3868.
6. Abah SO, Ohimain EI. Healthcare waste management in Nigeria: A case study. *J. Public Health Epidemiol*. 2011;3(3):99–110.
7. Zurbrugg C. Urban solid waste management in low-income countries of Asia. How to coe with the garbage crisis. Scientific Committee on Problems of the Environment (SCOPE) Urban Solid Waste Management Review Session, Durban, South Africa, November; 2002.
8. Anege B, Okuo JM, Ewekey EO, Ogbefun DE. Fractionation of Lead-Acid Battery Soil amended with Biochar. *Bayero Journal of Pure and Applied Sciences*. 2014;7(2):36-43.
9. Ugbune U, Okuo J. Sequential fractionation and distribution of heavy metals in soil from battery work sites. *Nigeria Journal of Applied Sciences*. 2011; 29:132-141.
10. Vogel's. Text Book of quantitative Chemical Analysis. 6th Edition, Prentice Hall, England. 2008;277.
11. Anege B, Eguavoen IW, Oviawe AP, Ogbeye O, Osayande AD. Profile of heavy metals In soil samples obtained from five auto repair workshops in Benin City Edo State. *Biological and Environmental Science Journal for the Tropics*, 2014; 11(2):84-93.
12. Oviasogie PO, Ukpebor EE, Omoti U. Distribution of polycyclic aromatic hydrocarbons in rural agricultural wetland soils of the Niger Delta Region. *Afr. J. Biotechnol*. 2006;5(15):1415– 1421.
13. Yahaya MI, Ezech GC, Musa YF, Mohammad SY. Analysis of heavy metals concentration in road side soils in Yauri, Nigeria, *African Journal of Pure and Applied Chemistry*. 2009;4(3):22-30.
14. Anege B. Concurrent contamination by heavy metals and persistent organic pollutants of soils within the vicinity of automobile workshops in Benin City. Ph.D. thesis, Department of Chemistry, University of Benin; 2016.
15. Osayande AD, Emofurieta WO, Obayagbona ON, Anege B. Physico-

- chemical and bacteriological quality assessment of hand-dug well waters in Igarra Town, Edo State, Nigeria. *Nigeria Journal of Applied Science*. 2015;33:1-13.
16. Igwe JC, Nnorom IC, Gbaruko BC. Kinetics of radionuclides and heavy metals behaviour in soils: Implications for plant growth. *African Journal of Biotechnology*. 2005;4(13):1541–1547.
 17. Ukpong EC, Udo EA, Umoh IC. Characterization of materials from Aba waste dumpsites. *International Journal of Engineering and Applied Sciences*. 2015; 6(3):1-10.
 18. Park K. Hospital waste management. In: *Preventive and Social Medicine*. 17th Ed. Banar sides. Bhanot, India. 2002;563–567.
 19. Anegebe B, Okuo JM, Okieimen FE. Characterization and remediation of soil co-contaminated by heavy metals and petroleum hydrocarbons. *Mostvirtue Benin City, Edo State, Nigeria*. 2017;177.
 20. Badejo AA, Taiwo AO, Adekunle AA, Bada BS. Spatio-temporal levels of essential trace metals around municipal solid waste dumpsites in Abeokuta, Nigeria. *Pacific Journal of Science and Technology*. 2013;14: 682–692.
 21. Oguntimehen I, Ipinmoroti K. Profile of heavy metals from automobile workshops in Akure, Nigeria. *J. Environ. Sci. and Technol*. 2007;1(1):19–26.
 22. Achi MM, Uzairu A, Gimba CE, Okunola OJ. Chemical fractionation of heavy metals in soils around the vicinity of automobile mechanic workshops in Kaduna metropolis, Nigeria. *Journal of Environmental Chemistry and Ecotoxicology*. 2011;3(7): 184–194.
 23. Akpoveta OV, Osakwe SA, Okoh BE, Tuya BO. Physicochemical characteristics and levels of some heavy metals in soils around metal scrap dumps in some parts of Delta State, Nigeria. *Journal of Applied Science and Environmental Management*. 2010;3(1):62–69.
 24. Akan JC, Mohammed Z, Jafiya L, Ogugbuaja VO. Organochlorine pesticide residues in fish samples from Alau Dam, Borno State, North Eastern Nigeria, J. *Environ. Anal. Toxicol*. 2013;3:171. DOI: 10.4172/2161-0525.1000171.
 25. Hazelton PA, Murphy BW. *Interpreting soil test results: What do all the numbers mean?* CSIRO Publishing, Collingwood. 2007;17.
 26. Eneje A, Roseta C, Lenoha K. Heavy metal content and physicochemical properties of municipal solid waste dump soil in Owerri Imo State. *International Journal of Modern Engineering Research (JMER)*. 2012;2(5):3795-3799.
 27. Anegebe B, Okuo JM. The impacts of quarry factory on the physico-chemical properties of soil and their potential health effects on the surrounding ecosystem. *Nigeria Journal of Applied Science*. 2013;31:126-135.
 28. Anegebe B, Okuo JM, Okienmen FE. The impact of inorganic and organic contaminant in soil within the vicinity of mechanic workshop in Benin city. *International Journal of Chemical Studies*. 2016;4(3):106-112.
 29. Amusan AA, Ige DV, Olawale R. Characteristics of soils and crops uptakes of metals in municipal waste dumpsites in Nigeria. *Journal of Human Ecology*. 2005; 17(3): 167-171.
 30. Stephen AO. Pollution status of soils and vegetation around busy motor parks in selected areas of Delta State, Nigeria. *Journal of Applied Chemistry*. 2013;4(2):5-12.
 31. Umoh SD, Etim EE. Determination of heavy metal contents from dumpsites within Ikot Ekpene, Akwalbom State, Nigeria. *The International Journal of Engineering and Science (IJES)*. 2013; 2(2):123-129.
 32. Adama MER, Fosu-Mensah B, Yirenya-Tawiah D. Heavy metal contamination of soils around a hospital waste incinerator bottom ash dumps site. *Journal of Environmental and Public Health*. 2016; Article ID 8926453:6. <http://dx.doi.org/10.1155/2016/8926453>
 33. Sabine M. Wendy G. *Human health effects of heavy metals*, Center for Hazardous Substance Research: 2; 2009.
 34. Ebong GA, Akpan MM, Mkpene VN. Heavy metal content of municipal and rural dumpsite soils and rate of accumulation by Carica papaya and Talinumtriangulare in Uyo Nigeria. *E-Journal of Chemistry*. 2008;5(2): 281-290
 35. Udeme AC. *Solid waste analysis and characterization*, Unpublished B.Sc. project, Department of Chemistry, University of Uyo, Uyo; 2001.
 36. Eddy NO, Odemelem SAM, Mbaba A. *Elementry composition of soil dumpsites*. *Electronic Journal of Environmental,*

- Agricultural and Food Chemistry. 2006; 5(3):49-65.
37. EPA: Environmental Protection Agency. Facts Reports on Health and Environmental Safety U.S.A.; 1991.
 38. Odukoya OO, Bamgbose O, Arowolo TAJ. Effect of solid waste; landfill on underground and surface water quality at Ring Road, Ibadan. Pure and Applied Sci. 2000;7:467-72.
 39. Department of Petroleum Resources, (DPR). Environmental guidelines and Standards for the petroleum industries in Nigeria Depaertment of Petroleum Resources, Ministry of Petroleum and Mineral Resources, Abuja, Nigeria; 1991.
 40. World Health Organization. Danger of Solid Waste, Health Criteria and supporting Information, WHO Genera.: 360213; 1984.
 41. Zhao P, Tan Y, Guo Y, Gu X, Wang X, Zhang Y. Interaction of tetracycline with Cd(ii) Cu(ii) and Pb(ii) and their cosorption behavior in soils. Environ. Pollut. 2013; 180: 206-213.
 42. Erdogan S, Baysal A, Akba O, Hamamci C. Interaction of metals with humic acid isolated from oxidized coal. Polish J. Environ. Stud. 2007;16(5):671-675.
 43. Sposito G. Chemical equilibria and kinetics in soils. Oxford University Press, New York; 1994.
 44. Abu-Kukati Y. Heavy metal distribution and speciation in sediments from Ziglab Dam – Jordan. Geological Eng. 2001;25(1):33 – 40.
 45. Abeh T, Gungshik J, Adamu MM. Speciation studies of trace elements levels in sediments from Zaramagada stream in Jos, Plateau State. Journal of Chemical Society of Nigeria. 2007;32(2):218-225.
 46. Horsfall M. (Jnr.), Spiff A. Speciation and bioavailability of heavy metals in sediment of Diobu River, Port Harcourt, Nigeria. European Journal of Science Reserve. 2005;6(3):20-36.
 47. Wuana RA, Okieimen FE. Heavy metals in contaminated soils: A review of Souces, chemistry, risks and best available strategies for remediation. J. Ecology. 2011;1-22.
 48. Tessier A, Campbell GC, Bisson M. Sequential extraction procedures for the speciation of particulate trace metals. J. Anal. Chem. 1979;51(7):844-851.
 49. Kabala C, Singh BR. Fractionation and mobility of copper, lead, and zinc in soil profiles in the vicinity of a copper smelter, J. Environ. Qual. 2001;30:485–492.
 50. Okuo JM, Ilavbarhe A, Anegebe B. Comparative studies on the use of fly ash and sludge in the remediation of heavy metal polluted soil. Fuoye Journal of Pure and Applied Sciences. 2016;1(1):1-16.
 51. Federal Environmental protection Agency (FEPA). Guideline and standard for Environmental control in Nigeria published by the Federal Environmental protection Agency Lagos. 1991;15–34.
 52. EPA. Environmental Protection Agency. Facts Reports on Health and Environmental Safety U.S.A.; 1991.
 53. APHA. Standard Methods for Examination of Water and waste 18th ed. American Public health Association, Washing ton D.C.; 1992.
 54. Amadi BA, Chikezie PC, Okeoma HC. Physicochemical characteristics of nworie River and its effect on liver function of rats. Journal of Nigerian Environmental Society. 2006;3:183-187.
 55. Akan JC, Abdulraham FI, Dimari GA, Ogugbuaja VO. Physicochemical determination of pollutants in wastewater and vegetable samples along the Jakara wastewater channelin Kano metropolis Kano State, Nigeria. European Journal of Scientific Research. 2008;23:122-133.
 56. Axel R. The molecular logic of smell. Scientific American. 2010;273(4):154-160.
 57. Housecroft CE, Sharpe AG. Inorganic Chemistry (3rd Ed) Prentice Hall, USA. 2008;305-306.
 58. Tordoff MG. Calcium: Taste, intake and appetite. Physiological Review. 2011; 81(4):1567- 1575.

© 2018 Nwaka et al.; This is an Open Access article distributed under the terms of the Creative Commons Attribution License (<http://creativecommons.org/licenses/by/4.0>), which permits unrestricted use, distribution, and reproduction in any medium, provided the original work is properly cited.

Peer-review history:
The peer review history for this paper can be accessed here:
<http://www.sciencedomain.org/review-history/22828>