



Immunohistochemical Analysis of Expression of Cyclin D1 in Different Grades of Oral Squamous Cell Carcinoma

**Sana Fatima ^{a*}, Mervyn Hosein ^b, Saima Akram Butt ^a, Faraz Baig ^c,
Rehan Ahmed Siddiqui ^d and Fizza Abidi ^a**

^a Department of Oral Pathology, Ziauddin College of Dentistry, Ziauddin University, Karachi, Pakistan.

^b Ziauddin College of Dentistry, Ziauddin University, Karachi, Pakistan.

^c Department of Pathology, Ziauddin University, Karachi, Pakistan.

^d Department of Research, Ziauddin University, Karachi, Pakistan.

Authors' contributions

This work was carried out in collaboration among all authors. All authors read and approved the final manuscript.

Article Information

DOI: 10.9734/JPRI/2022/v34i30B36072

Open Peer Review History:

This journal follows the Advanced Open Peer Review policy. Identity of the Reviewers, Editor(s) and additional Reviewers, peer review comments, different versions of the manuscript, comments of the editors, etc are available here: <https://www.sdiarticle5.com/review-history/85701>

Original Research Article

Received 02 February 2022

Accepted 07 April 2022

Published 12 April 2022

ABSTRACT

Aims: The present study aimed to evaluate the expression of cyclin D1 in oral squamous cell carcinoma and to find association of expression of cyclin D1 with different histological grades of oral squamous cell carcinoma.

Study Design: It is a cross sectional study.

Place and Duration of Study: Oral squamous cell carcinoma samples were collected histopathology laboratory of Ziauddin Hospital, North Nazimabad Karachi. Immunohistochemistry was performed in multiple disciplinary research laboratory of Ziauddin University, Karachi. The duration of study was from January 2021 to January 2022.

Methodology: The present study included taking biopsy samples from oral squamous cell carcinoma patients. Patients with history of other oral cavity tumors, patients with history of any other treatment of oral cancer were excluded from the study. Immunohistochemistry was performed on a total of 150 samples using anti cyclin D1 antibodies.

Results: A total of 150 samples were part of study. Expression of cyclin D1 was found to be present in 77.3% of cases where as 22.7% of cases did not show expression of cyclin D1. A

statistically significant association was shown between different grades of oral squamous cell carcinoma and intensity scoring (p value 0.004). Association between labelling index score for cyclin D1 and different grades of oral squamous cell carcinoma showed statistically significant p value (0.003). Association of total scores of cyclin D1 with different grades of oral squamous cell carcinoma was also found to be statistically significant (p value 0.003).

Conclusion: The present study shows that oncogenic effects on cyclin D1 by mutations caused by oral squamous cell carcinoma can be detected by immunohistochemistry in the form of its overexpression. The association between overexpression of cyclin D1 and different histological grades can be utilize in predicting the oncogenic behavior of oral squamous cell carcinoma.

Keywords: Oral squamous cell carcinoma; cyclin D1; immunohistochemistry; histological grades.

1. INTRODUCTION

The most common malignancy of oral cavity is oral squamous cell carcinoma (OSCC) which arises from its lining epithelium [1]. It accounts up to 85-95% of all oral malignancies [2]. OSCC burdens the world as sixth leading cause of death accounting for annual 2.5% of all new cancer cases and 1.9% of cancer deaths [3]. The use of tobacco, alcohol and betel nut are some of risk factors that results in development of OSCC [4]. Tobacco and alcohol are found to be independent risk factors for development of OSCC [5]. Treatment modalities for OSCC include surgery with or without postoperative chemotherapy or radiation. The survival rate of OSCC patients has not changed over the past 30 years in spite of advancement in treatment options notably for patients in advance stage so there is dire need to identify tissue based molecular markers that have potential relationship with OSCC which can help in its early diagnosis or prognosis [6].

Tumorigenesis is a multistage process that causes disturbance in cell cycle. This disturbance in cell cycle leads to uncontrolled growth of tumor cells which is the characteristic feature of cancer.

Cyclin d1 gene (CCND1) is located on long arm of chromosome 11q13 [7]. It encodes 36-kda protein cyclin d1 which plays a critical role in regulation of cell cycle by modulating the transition of cell cycle from g1 to s phase. Cyclin D1 forms complexes with cyclin dependent kinases (cdk-4 and cdk-6), by binding and activating these protein kinases, required for phosphorylation of retinoblastoma (prb) protein resulting in release of E2F transcription factor to transcribe genes which are needed by cells to enter into the s phase [8]. Cyclin D1 is overexpressed in a variety of human malignancies such as breast carcinomas [9],

hepatocellular carcinomas [10], papillary thyroid carcinomas [11] and OSCC [12]. The overexpression of cyclin D1 can be detected by immunohistochemistry that harmonize well with histopathology, which being the gold standard for microscopic study and detection of OSCC. The present study aims to evaluate the expression of cyclin D1 in OSCC and to find its association with different grades of OSCC using immunohistochemical method.

2. MATERIALS AND METHODS

This laboratory based immunohistochemical study involved use of 150 formalin fixed paraffin embedded tissue blocks of histopathological diagnosed cases of oral squamous cell carcinoma from department of histopathology, Ziauddin Hospital North Nazimabad, Karachi. Informed consent was taken from patients. Ethical clearance was taken from ethical committee of institute. Cases diagnosed other than OSCC, cases with limited tissue material for accurate diagnosis and cases with extensive necrosis were excluded from study.

2 sections of 3-4 um were cut from each tissue block. One for Hematoxylin and Eosin staining and other for immunohistochemistry. Grading of tumors were done according to Broder's criteria [13].

Immunohistochemical analysis was performed by using tissue sections present on adhesive (saline) slides. The slides were deparaffinized and hydrated by placing in series of reagents, each for 1 minute in following sequence: xylene followed by 95% alcohol followed by tap water. Antigen retrieval was performed by using pressure cooker for 7 minutes. The slides were incubated with blocking agent to block endogenous peroxidase activity for 10 minutes then rinsed with tap water. The slides were incubated with primary antibody at dilution of

1:100 (pa5-32373). The slides were rinsed with PSB followed by incubation with secondary antibody and then rinsed again followed by application of (DAB) solution. The sections were washed then counter stained with hematoxylin. Coverslips were placed and slides were examined under light microscope.

For quality control slide of tonsil tissue was used positive control and slide of OSCC without primary antibody was used as negative control.

Staining of nucleus was considered was positive for cyclin D1 expression when present in greater than 1% of cells. The percentage of cells showing nuclear staining was calculated as expression score (ES) 1, 2, 3 and 4 when 1-25%, 25-50%, 50-75% and > 75% cells stained respectively. The staining intensity score (IS) was recorded as 1(mild), 2(moderate) and 3(strong). The total score (TS) was calculated by multiplying ES with is and graded as weak, moderate and strong [14].

3. RESULTS

The obtained data were entered and analyzed on SPSS (version 20.0). In the present study of 150

cases of OSCC 77.3% of cases were immune positive for cyclin D1 whereas 22.7% of cases did not show any expression of cyclin D1. The immune positivity for cyclin D1 was shown by 37.5% of cases of alveolus, 76.59% cases of buccal mucosa, 93.75% cases of tongue and 100% cases of each lip and palate. The cases of OSCC were classified into well, moderate and poorly differentiated tumors among which high immune positivity was shown by moderately differentiated tumors followed by well differentiated tumors and then by poorly differentiated tumors (Table 1).

Association between intensity and differentiation of grades of OSCC was checked using Chi square test which showed a statistically significant P value ($P = 0.004$). (Table 2).

A statistically significant association was also found between labelling index score and different grades of OSCC $P = 0.003$ (Table 2).

Association between total scores of cyclin D1 and different grades of OSCC also showed a statistically significant p value ($P = 0.003$) (Table 3).

Table 1. Immune reactivity of Cyclin D1 according to site and grading of OSCC

Site of OSCC	Subsites of OSCC	Total number	Positive cases	Negative cases	% of positive reactivity
OSCC	Buccal mucosa	94	72	22	76.59%
	tongue	32	30	2	93.75%
	alveolus	16	6	10	37.5%
	lip	6	5	0	100%
	palate	2	2	0	100%
Grade of OSCC	Well differentiated	17	9	8	52.94%
	Moderately differentiated	126	105	21	83.33%
	Poorly differentiated	7	2	5	28.57%

Table 2. Association between grades of OSCC with intensity and expression score for cyclin D1

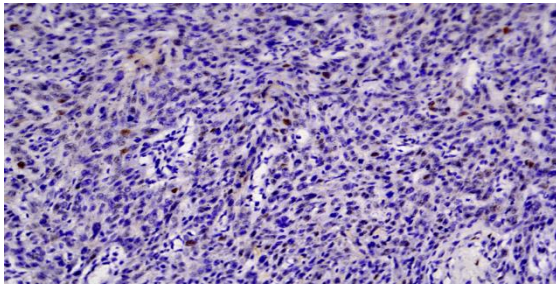
Grades of OSCC	Mild intensity	Moderate intensity	Strong intensity	P value	Score 1	Score 2	Score 3	Score 4	P value
Well differentiated	3	3	3	0.004*	6	3	0	0	0.003*
Moderately differentiated	31	40	34		63	27	15	0	
Poorly differentiated	0	2	0		2	0	0	0	
Total OSCC	34	45	37		71	30	15	0	

* Statistically significant, Chi square test applied

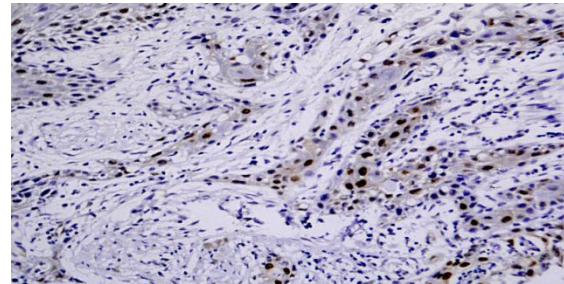
Table 3. Association of total scores of cyclin D1 with site of OSCC and grades of OSCC

	Subsites of OSCC	Weak	Moderate	Strong	P value
Site of OSCC	Buccal mucosa	55	11	6	0.00*
	tongue	6	0	0	
	alveolus	12	12	6	
	lip	3	0	3	
	palate	2	0	0	
Grades of OSCC	Well differentiated	6	3	0	0.003*
	Moderately differentiated	70	20	15	
	Poorly differentiated	2	0	0	

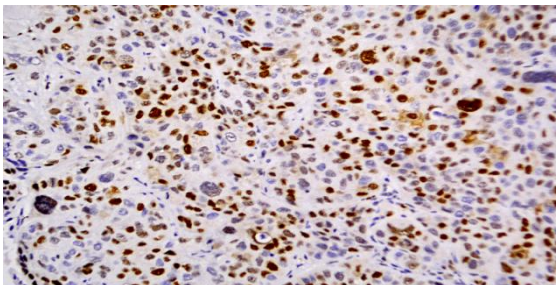
* Statistically significant, Chi square test applied



Weak expression of cyclin D1 in OSCC



Moderate expression of cyclin D1 in OSCC



Strong expression of cyclin D1 in OSCC

4. DISCUSSION

The present study was conducted to determine the immunoreactivity and expression of cyclin D1 in OSCC and its association with site of OSCC and different grades of OSCC. The immune positivity of cyclin D1 was determined by presence of brown staining in nucleus. In normal cells the levels of cyclin d1 lowers as the cell progresses to S phase by GSK3β-mediated phosphorylation of Thr286 and CRM1-dependent nuclear export followed by degradation in cytoplasm by 26S proteasome in ubiquitin-dependent manner. However in presence of abnormal proliferation and in cancerous cells due to mutation of cyclin D1 it does not remove resulting in nuclear accumulation of cyclin D1 resulting its higher expression [15]. In this study increased expression of cyclin D1 was mainly found in peripheral layers of tumor islands which explains

the fact that proliferating cells are mostly present on peripheral areas of tumors and cyclin D1 being the activator of cell proliferative cycle causes this increased expression in these areas [16].

The positivity of over expression of cyclin D1 was recorded in 77.3% of cases in present study. Similar results were reported by a study conducted by Punnya et al., in which they found 70.7% of expression of cyclin D1 in OSCC cases [17]. The present study is also in accordance with other studies in which expression of cyclin D1 is reported as 68%, 66.6% and 58.3% in OSCC [18, 19, 20]. Over expression of cyclin D1 can be due to amplification of its CCND1 gene, translocation of chromosomes and other post translational events [21]. Overexpression of cyclin D1 causes dysregulation of cyclin dependent kinases, changes in cell cycle control, less dependency on growth factors, unchecked

proliferation of cells and ultimately tumor growth [22].

However, study conducted by Saawarn et al. [14] reported 45% of expression of cyclin D1 in OSCC cases. A study conducted by Huang et al. [23] found expression of cyclin D1 in only 36% of cases of OSCC. The present study showed a statistically significant association between total score of expression of cyclin d1 with grades of OSCC. Our results are in accordance with other studies by Saawarn et al and Das et al. [14, 19]. However the findings of this study are not in agreement with some previous studies by Dhingra et al. and Zhi-en et al. [24, 25] in which they did not find any significant association between total score of expression of cyclin D1 and grades of tumor. The differences in results might be attributed in differences in technique and type of antibodies used for detection for expression of cyclin D1.

5. CONCLUSION

One of the important parameter of OSCC that helps in understanding the outcome of patients is grading. The present study attempted to evaluate the expression of cyclin D1 and its association with different grades of OSCC. Increase expression of cyclin d1 reflects the proliferative activity of cyclin D1 in OSCC. Observations made in this study may help in better understanding of characteristics of OSCC. It may also contribute in helping the clinicians to provide more appropriate treatment options as well as in wellbeing of patients.

CONSENT

As per international standard or university standard, patients' written consent has been collected and preserved by the author(s).

ETHICAL APPROVAL

Ethical approval was obtained from Ziauddin university ethics review committee (reference code: 0040218SFOPATH)

DISCLAIMER

The products used for this research are commonly and predominantly use products in our area of research and country. There is absolutely no conflict of interest between the authors and producers of the products because we do not intend to use these products as an avenue for

any litigation but for the advancement of knowledge. Also, the research was not funded by the producing company rather it was funded by personal efforts of the authors.

COMPETING INTERESTS

Authors have declared that no competing interests exist.

REFERENCES

1. Sarode G, Sarode SC, Tupkari J, Patil S. Is oral squamous cell carcinoma unique in terms of intra-and inter-tumoral heterogeneity? *Translational Research in Oral Oncology*. 2017;2: 2057178X17703578.
2. Nocini R, Lippi G, Mattiuzzi C. Biological and epidemiologic updates on lip and oral cavity cancers. *Ann Cancer Epidemiol*. 2020;4:1-6.
3. Bray F, Ferlay J, Soerjomataram I, Siegel RL, Torre LA, Jemal A. Global cancer statistics 2018: GLOBOCAN estimates of incidence and mortality worldwide for 36 cancers in 185 countries. *CA: A Cancer Journal for Clinicians*. 2018;68(6):394-424.
4. Mishra R, Nagini S, Rana A. Expression and inactivation of glycogen synthase kinase 3 alpha/beta and their association with the expression of cyclin D1 and p53 in oral squamous cell carcinoma progression. *Mol Cancer*. 2015;14:20.
5. Cardesa A, Slootweg PJ. Benign and Potentially malignant lesions of the squamous epithelium and squamous cell carcinoma, in *Pathology of the Head and Neck*; 2006.
6. Myers JN, Elkins T, Roberts D, Byers RM. Squamous cell carcinoma of the tongue in young adults: increasing incidence and factors that predict treatment outcomes. *Otolaryngol Head Neck Surg*. 2000;122:44-51.
7. Huang SF, Cheng SD, Chuang WY, Chen Ih, Liao CT, Wang HM, Hsieh Il. Cyclin d1 overexpression and poor clinical outcomes in taiwanese oral cavity squamous cell carcinoma. *World Journal of Surgical Oncology*. 2012;10:40.
8. Qie S, Diehl JA. Cyclin D1, cancer progression, and opportunities in cancer treatment. *Journal of Molecular Medicine*. 2016;94(12):1313-1326.
9. MohammadizadehF, Hani M, Ranaee M, Bagheri M. Role of cyclin D1 in breast

- carcinoma. Journal of Research in Medical Sciences: The Official Journal of Isfahan University of Medical Sciences. 2013; 18(12):1021.
10. Zhang YJ, Chen SY, Chen CJ, Santella RM. Polymorphisms in cyclin D1 gene and hepatocellular carcinoma. *Molecular Carcinogenesis*: Published in cooperation with the University of Texas MD Anderson Cancer Center. 2002;33(2): 125-129.
 11. Khoo ML, Beasley NJ, Ezzat S, Freeman JL, Asa SL. Overexpression of cyclin D1 and underexpression of p27 predict lymph node metastases in papillary thyroid carcinoma. *The Journal of Clinical Endocrinology & Metabolism*. 2002; 87(4):1814-1818.
 12. Ramos-Garcia P, Gil-Montoya JA, Scully C, Ayén A, González-Ruiz L, Navarro-Triviño FJ, González-Moles MA. An update on the implications of cyclin D1 in oral carcinogenesis. *Oral Diseases*. 2017;23(7):897-912.
 13. Anneroth G, Batsakis J, Luna M. Review of the literature and a recommended system of malignancy grading in oral squamous cell carcinomas. *Scandinavian Journal of Dental Research*. 1987;95(3):229–249.
 14. Saawarn S, Astekar M, Saawarn N, Dhakar N, kumar S, Sagari G. Cyclin D1 expression and its correlation with histopathological differentiation in oral squamous cell carcinoma. *The Scientific World Journal*. 2012;2012:978327.
 15. Kim JK, Diehl JA. Nuclear cyclin D1: an oncogenic driver in human cancer. *Journal of cellular physiology*. 2009 Aug; 220(2):292-6.
 16. Neves Ada C, Mesquita RA, Novelli MD, Todtai E, De Sousa SO. Comparison between immunohistochemical expression of cyclin D1 and p21 and histological malignancy graduation of oral squamous cell carcinomas. *Braz Dent J*. 2004;15:93.
 17. Angadi PV, Krishnapillai R. Cyclin D1 expression in oral squamous cell carcinoma and verrucous carcinoma: correlation with histological differentiation. *Oral Surgery, Oral Medicine, Oral Pathology, Oral Radiology, and Endodontology*. 2007;103(3):e30-e35.
 18. Bova RJ, Quinn DI, Nankervis JS, Cole IE, Sheridan BF, Jensen MJ, et al. Cyclin D1 and p16ink4a Expression predict reduced survival in carcinoma of the anterior. *Tongue*. 1999;5:2810–19.
 19. Das SN, Khare P, Singh MK, Sharma SC. Correlation of cyclin D1 expression with aggressive DNA pattern in patients with tobacco-related intraoral squamous cell carcinoma. *Indian J Med Res*. 2011;133:381-86.
 20. Ahmad G, Mahmood D. Cyclin D1 expression of different histological grades in oral squamous cell carcinoma patients from northern India. *Archive of Oncology*. 2018;24(1):6-9.
 21. Todd R, Hinds PW, Munger K, Rustgi AK, Opitz OS, Seliman Y, et al. Cell cycle dysregulation in oral cancer. *Crit Rev oralbiol Med*. 2002;13:51-61.
 22. Montalto FI, De Amicis F. Cyclin D1 in cancer: a molecular connection for cell cycle control, adhesion and invasion in tumor and stroma. *Cells*. 2020;9(12):2648.
 23. Huang SF, Cheng SD, Chuang WY, Chen IH, Liao CT, Wang HM, Hsieh LL. Cyclin D1 overexpression and poor clinical outcomes in Taiwanese oral cavity squamous cell carcinoma. *World Journal of Surgical Oncology*. 2012;10(1):1-7.
 24. Dhingra V, Verma J, Misra V, Srivastav S, Hasan F. Evaluation of cyclin D1 expression in head and neck squamous cell carcinoma. *Journal of Clinical and Diagnostic Research: JCDR*. 2017; 11:EC01.
 25. Zhi-EN F, Ping Z, LI-Zhen W, Wan-Tao C. Prognostic value of cyclin D1 expression in head and neck squamous cell carcinoma assessed by tissue microarrays. *China Journal of Oral & Maxillofacial Surgery*. 2012;10.

© 2022 Fatima et al.; This is an Open Access article distributed under the terms of the Creative Commons Attribution License (<http://creativecommons.org/licenses/by/4.0>), which permits unrestricted use, distribution, and reproduction in any medium, provided the original work is properly cited.

Peer-review history:

The peer review history for this paper can be accessed here:
<https://www.sdiarticle5.com/review-history/85701>