



Determination of Heavy Metal Concentration in Two Bony Fish (Catfish and Tilapia) from Orashi River in Rivers State, Nigeria

N. E. Okwodu ^{a*}, P. U. Okorie ^a and B. E. B. Nwoke ^a

^a Post Graduate School, Department of Animal and Environmental Biology, Imo State University Owerri, Nigeria.

Authors' contributions

This work was carried out in collaboration among all authors. All authors read and approved the final manuscript.

Article Information

DOI: 10.9734/AJRIZ/2021/v4i430122

Editor(s):

(1) Dr. Golam Mustafa, Center for Resource Development Studies Ltd., Bangladesh.

Reviewers:

(1) Abinawanto, Universitas Indonesia, Indonesia.

(2) Javed Gafur Khan Pathan, Maharashtra Animal & Fishery Sciences University, India.

(3) Ghada Rashad Sallam, National Institute of Oceanography and Fisheries, Egypt.

Complete Peer review History, details of the editor(s), Reviewers and additional Reviewers are available here:

<https://www.sdiarticle5.com/review-history/77647>

Received 02 October 2021

Accepted 04 December 2021

Published 14 December 2021

Original Research Article

ABSTRACT

The research was intended to study the influence of human and industrial activities on the Orashi River and two bony fish (*Clarias gariepinus* and *Tilapia nilotica*). Three groups are observed to have impacted the environment – Oil/gas industries, tyre burning from abattoir, untreated human and animal waste from settlers and the abattoir. The study was carried out from September 2019 to August 2020. The mean concentrations of the parameters studied in some samples were close to or exceeded World Health Organization (WHO) and Federal Ministry of Environment (FMEnv) recommended limits for drinking water and seafood. The results from this study have provided information on the heavy metals profile on the fish of the river. The level of heavy metals in the muscle of Catfish and Tilapia showed a range of Cadmium in Catfish (1-3.9mg/kg and Tilapia (0.1-4.2mg/kg) with the highest level occurring in station 2 (3.47mg/kg for Catfish and 3.39mg/kg for Tilapia) which is high with regard to FAO 1983⁵, FAO/WHO 1089⁶, EEC 2005⁴ permissible limit of 0.01mg/l and USEPA SQG (1mg/kg) level in seafood. The levels of essential heavy metals in fish muscle were Copper (Catfish-10.9-33mg/kg, Tilapia -17.3-40.6mg/kg), Iron (Catfish-1.0-2.5mg/kg, Tilapia -0.1-5.6mg/kg) were within the FAO 1983 permissible limit while Zinc (Catfish-22-213.2mg/kg) and Tilapia (30.1-196mg/kg) exceeds the limit in some stations. Catfish muscles

*Corresponding author: Email: okwodunicholas@yahoo.com;

recorded higher mean value (127.12mg/kg) for all heavy metals than tilapia (44.03mg/kg) and the sequence is Copper > Zinc > Iron > Cadmium. The concentration of heavy metals in Orashi River is in the sequence: Sediment > Catfish > Tilapia > Water. The Total Heavy metal concentration in muscle of Catfish (0.5-1.8mg/kg) and Tilapia (0.1-3.8mg/kg) were within permissible limit.

Keywords: Metal; determination; industries; seafood; orashi river; contamination.

1. INTRODUCTION

1.1 Background Information

Water is the most important natural resources and there are many conflicting demand for them. Skillful management of water bodies is required if they are to be used for such diverse purpose as domestic, industrial supply, crop irrigation, transport, recreation, sports, commercial fisheries, power generation and waste disposal [1-3]. Water bodies are vulnerable to contamination accident and bioterrorism attacks because they are relatively unprotected, easily accessible, often isolated and their various use by human pre-disposes them to contamination [4]. Environmental exposure to toxic metals is a critical issue in environmental and public health.

The modern world is aware of the relationship between water and water borne diseases, as a vital public health issue. Heavy metals are well known pollutants in aquatic systems where industrial wastes are discharge, petroleum production and refining, gas flaring, gas processing plants and conveyance pipelines [5,6].

Gas flares are operated in relatively uncontrolled manner in Niger Delta region. These effluents discharge and atmospheric emissions from flow stations and refineries often settle in the aquatic environment. When contamination reaches levels in excess of the assimilative capacity of the receiving waters, they may affect the survival, reproduction capacity, growth and behavioral condition of organisms [6].

Fishes are important as a source of food, foreign exchange earner, employment, unity in a community and cultural identity, Aesthetic value, scientific study of aquatic life etc [7,8].

The fish of interest include the African Mud Catfish (*Clarias gariepinus*) and Tilapia (*Tilapia niloticus*) which are tropical freshwater fish inhabiting Orashi River. These two species were chosen for the study because they are sedentary or resident in the area of interest, easy to

identify, abundant all year round, long lived, be available for sampling all year and has economic value to the inhabitant of the area and could be good bio-indicators as they feed from the surface water and sediment directly or indirectly.

In the attempt to define and measure the effect and presence of pollutants on aquatic ecosystems, biomarkers or bio-indicators have attracted a great deal of interest. Fish has been used for many years to indicate whether water is clean or polluted [19,10]. For instance, fish and shellfishes including bivalves are vulnerable to metal contamination and have been reported as effective bio-monitors used for heavy metal monitoring purposes world- wide [11,12]. The increase level of heavy metals in human has often been traced to heavy metal contamination in the aquatic system.

The heavy metals of interest include the non-essential trace element Cd, Cr, and Pb) and the essential metals such as Cu, Zn, and Fe which have important biochemical functions to the organism at very low concentration these heavy metals are blacklisted in European Economic Commission (EEC) Directive as dangerous substances in the aquatic environment. These heavy metals can be hazardous to human, even in very small amount. They are taken up by aquatic organisms and passed up the food chain through the process known as bio-magnification. Species varies in their degree of tolerance with the result that under polluted conditions, a reduction in species diversity is the most obvious effect [13]. The intense industrial activity in Niger Delta region has attracted a lot of research interest but no systematic study has so far been conducted in Orashi River of ONELGA to ascertain its level of metal concentration and the health effects on the inhabitants. This may be attributed but not limited to the restive nature of the inhabitants of the area as researchers may be vulnerable to attack by the youths who always vent their anger on soft targets.

It is therefore very important to conduct this study in view of the rapid growth of population, exploration and exploitation of natural resources,

lack of environmental regulations, industrialization, urbanization, clearing of River bank vegetation, annual dredging of the river to contain flooding, construction of roads and bridges, drains and embankment walls and Agricultural activities of the inhabitant of Ogba/Egbema/Ndoni LGA (ONELGA) to record the range of the concentration within commercial as well as non-commercial species so that assessment about potential hazardous levels from the human nutritional standpoint can be made.

1.2 Aim

To determine the concentrations of heavy metals in the two sub tidal edible and commercial Bony fish (*Clarias gariepinus* and *Tilapia nolticus*) from Orashi River. This is to enable the assessment of potential hazardous levels from human nutritional stand point.

2. MATERIALS AND METHODS

2.1 The Study Area

The study area is Ogba/Egbema/Ndoni LGA in Rivers State of Nigeria. (Fig: 1a, b & c). The area has a number of oil wells and major flow stations within the Niger Delta region of Nigeria. (Plate 2). Nigerian Agip Oil Company (NAOC) and Total E & P Nigeria Limited explores, exploit crude oil and flare gases indiscriminately in the area at Ebocha, Obrikom and Obitte.

The inhabitants of the area are predominantly farmers and fishermen which is their basic source of livelihood. The area has a growing population of 283, 294 in 2006 and a projection of 398,000 in 2016 (National population commission of Nigeria (web), National Bureau of statistics (web).

The site is Orashi river, a non-tidal freshwater of the lower Niger basin that runs through some communities in Imo State, Egbema, Ndoni and Ogba communities in Rivers State. The river is a

freshwater swamp forest river with several tributaries and originate from River Niger and empties into Sombrieiro river in Ahoada. (Plate 1). The fishes commonly found in Orashi River include *Clarias* species, *Tilapia*, Eels, *Malapterurus electricus*, *Chysichthys nigrodigitatus* (catfish) among others. The area is tropical with two seasons- the rainy (April – October) and dry season (November – March) which are usually flooded in the rainy seasons.

2.2 Sampling Stations

A reconnaissance survey was carried out in the study area on November 2018 and then sampling stations were established at five locations along the Orashi River, 5km distance from each other using Global positioning system navigator (GPS) as shown in Table 1 and represented by station 1 – 5.

2.3 Field Study

Water, Sediment and fish samples were collected from the 5 sampling stations monthly beginning from September 2019 for 5 sampling periods during rainy and dry seasons respectively. The sampling of the 5 stations started at about 8.30 am

2.4 Field Collection of Fish Samples

Fish samples were collected from the 5 sampling stations monthly beginning from September 2019 to August 2020 for 6 sampling periods during rainy and dry seasons respectively. The fish samples - catfish (*Clarias gariepinus*) and *Tilapia* (*Tilapia nolticus*) were purchased from artisanal fishermen from the five (5) stations for each sampling period. The samples were washed in distilled water, kept in labeled air tight plastic containers and packed in a cooler and subsequently transferred to the IPS laboratory of Rivers state University Port-Harcourt for tissue analysis. The samples were frozen until analysis in order to prevent post Mortem changes which may be either putrefactive or auto-lytic in nature.

Table 1. Geographical positioning system (GPS)

STATIONS	LOCATIONS	COORDINATES
Station 1	Okwuzi	N05°29'08.3" E006°42'26.3"
Station 2	Ebocha	N05°27'49.3" E006°42'06.6"
Station 3	Ndoni	N05°27'24.6" E006°40'27.8"
Station 4	Obrikom	N05°23'31.0" E006°39'03.0"
Station 5	Omoku	N05°20'18.7" E006°38'34.6"



Fig 1a. Map of Nigeria Showing Rivers State



Fig. 1b Map of Rivers State Showing Ogbia/Egbema/Ndoni L.G.A

Fig. 1c Map of Ogbia/Egbema/Ndoni L.G.A



Fig. 1. Maps showing the study area

2.5 Determination of Heavy Metals In Fishes

The dried and ground samples were taken and digested by micro-wave digestion method. In this method of digestion, nitric acid (Analar grade) and hydrogen peroxide (Analar Grader) in the ratio of 3:1 were added to the samples. The mixture was digested at 150°C for 30 minutes in microwave oven.

Microwave digestion was used in this work because studies have shown that it is more accurate method of digestion of samples (especially for organic samples) than other methods such as dry ash and wet digestion. The hydrogen peroxide added to the sample with nitric acid reduces nitrous vapor and speeds up digestion of organic substances by increasing the temperature of reaction in the digestion process. The digested samples were filtered with 20mls of

de-ionized water. The filtrate was collected with clean acid-washed and appropriately labeled 50mls polyethylene sampling containers for analysis by Atomic Absorption Spectrometric method.

Unicam 969 Atomic Absorption Spectrometer (AAS) was used in the determination of heavy metals - Zn, Cu, Pb, Cr, Cd, and Fe using standard method [5].



Plate 1. Containment of oil spill in Orashi River along station 2 during the sampling period in October 2019 (Direct photograph by Researcher)



Plate 2. NAOC Oil Well heads near station (Direct photograph by Researcher)



Plate 3. *T. niloticus* (17.4cm x 110gms)



Plate 4. *C. gariepinus* (30cm x 440gms)

2.6 Data Analysis

All statistical analysis and presentation of results was done using Microsoft excel and Minitab 16 software.

Raw data was subjected to a two way analysis of variance (ANOVA) with replication using MINITAB.

Analysis of variance (single factor) was used to test for significant differences between the condition factors values of Catfish and Tilapia from the five study locations.

3. RESULTS

3.1 Heavy Metals in Fishes

Six heavy metals were sampled and analyzed in catfish and Tilapia of Orashi River in 5 stations during the monitoring period. These include: Chromium, Cadmium, Copper, Lead, Zinc and Iron. Of these metals monitored in fish, Chromium and Lead was not detected throughout in the stations during the monitoring period.

3.2 Cadmium (Cd) IN Catfish

The concentration of Cadmium recorded in Catfish is presented in appendix 1a and shown in fig. 2. The results indicate that Cadmium level in Catfish muscle/tissue ranged from 1.0 to 3.9 mg/kg in all the stations. The mean values obtained were station 1(3.07 mg/kg), station

2(3.47 mg/kg), station 3(2.93 mg/kg), station 4(3.06 mg/kg) and station 5(1.7 mg/kg).

Seasonal variations in appendix 2 show that Cadmium level was higher during the dry season than the rainy season.

The analysis of variance (ANOVA) result showed that there is significant difference ($p < 0.05$) in time ($P=0.015$).

3.3 Cadmium (Cd) IN Tilapia

The concentration of Cadmium recorded in Tilapia is presented in appendix 1b and shown in fig 3. The results indicate that Cadmium level in tilapia muscle/tissue ranged from 0.1 to 4.2 mg/kg in all the stations. The mean values obtained for stations were station 1(2.56mg/kg), station 2(3.39 mg/kg), station 3(1.07 mg/kg), station 4(2.23 mg/kg) and station 5(2.17 mg/kg).

Seasonal variations in appendix 3 show that Cadmium level was higher during the rainy season than the dry season.

The analysis of variance (ANOVA) result in appendix 17 showed that there is no significant difference ($p < 0.05$) in location and time observed in tilapia muscle/tissue during the sampling period ($P=0.979$).

3.4 Copper (Cu) in Catfish

The concentration of Copper recorded in Catfish muscle/tissue is shown in fig 4. The results

indicate that Copper level in this study ranged from 10.9 to 33 mg/kg in all the stations. The mean values observed for copper was station 1(28.04mg/kg), station 2(28.23 mg/kg), station 3(18.18 mg/kg), station 4(26.58 mg/kg) and station 5(19.08 mg/kg).

Seasonal variations show that Copper level was higher during the dry season than the rainy season.

The analysis of variance (ANOVA) result showed there were no significant difference ($P < 0.05$) in time ($P=0.837$)

3.5 Copper (Cu) In Tilapia

The concentration of Copper recorded in tilapia is shown in fig 5. The results indicate that Copper level in this study ranged from 17.3 to 40.6mg/kg in all the stations. The mean values observed for copper in tilapia was station 1(19.24 mg/kg), station 2(33.68 mg/kg), station 3(28.12 mg/kg), station 4(27.33 mg/kg) and station 5(25.26) mg/kg.

Seasonal variations show that Copper level was higher during the rainy season than the dry season. (Appendix 3)

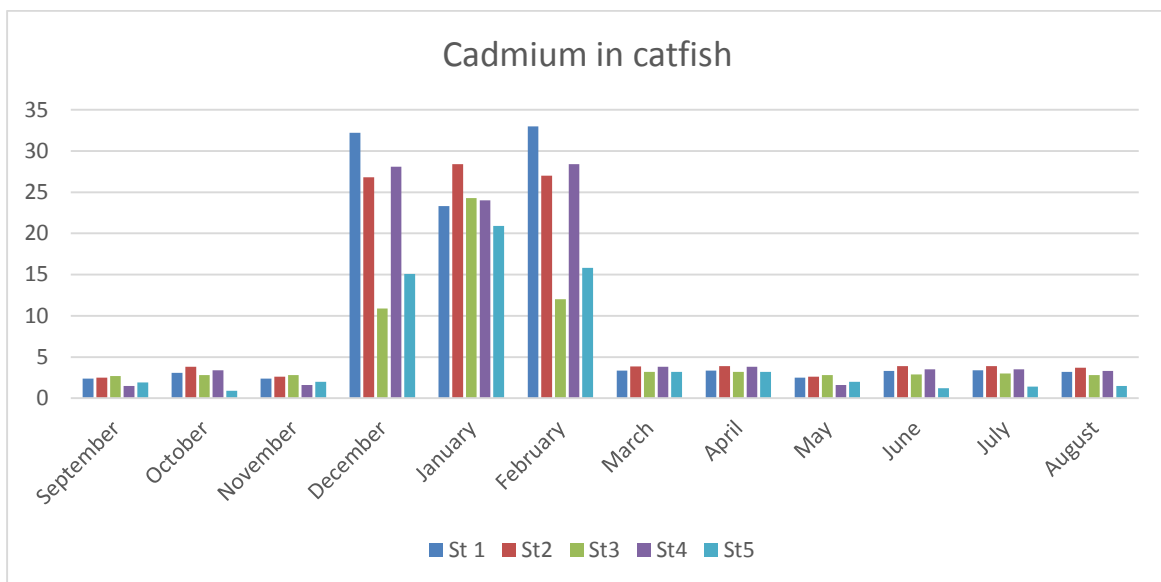


Fig. 2. Cadmium (Cd) in Catfish (Mg/Kg)

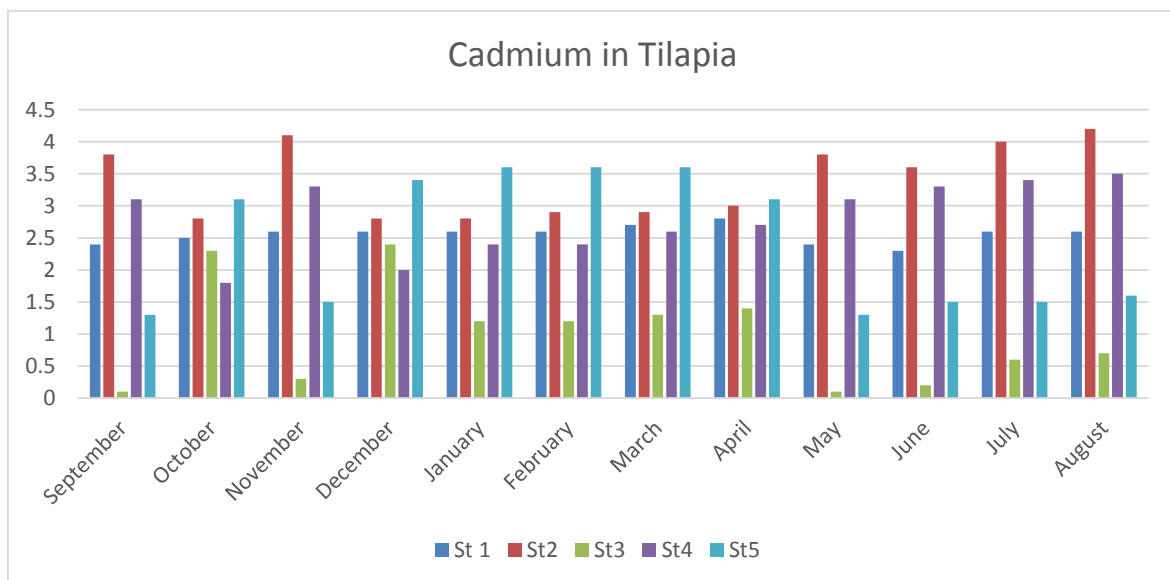


Fig. 3. Cadmium (Cd) in Tilapia (Mg/Kg)

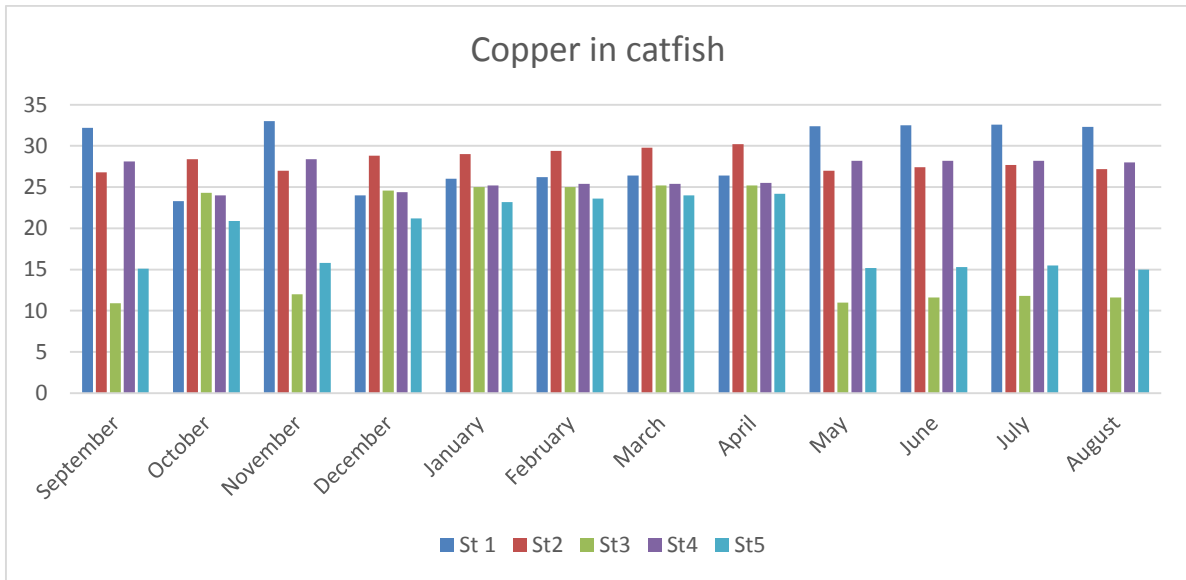


Fig. 4. Copper (Cu) in Catfish (Mg/Kg)

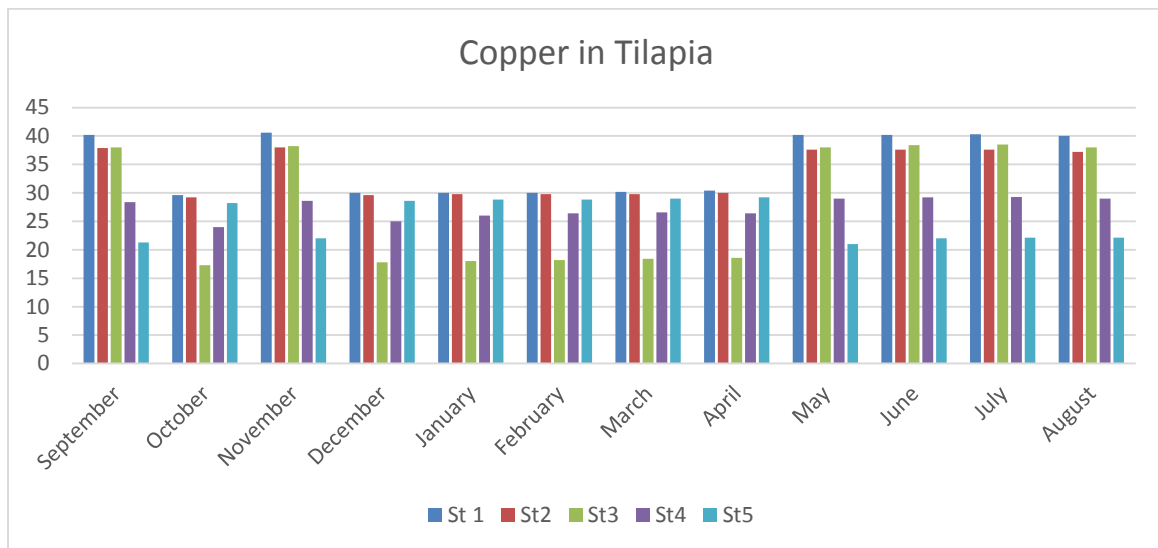


Fig. 5. Copper (Cu) in Tilapia (Mg/Kg)

The analysis of variance (ANOVA) result showed there were significant difference ($p < 0.05$) in time ($p=0.019$)

3.6 ZINC (Zn) IN CATFISH MUSCLE/TISSUE

The concentration of Zinc recorded in Catfish muscle/tissue is shown in fig 6. The results indicate that Zinc level in this study ranged from 22 to 213.2mg/kg in all the stations. The mean values observed for copper was station 1(59.6mg/kg), station 2(37.03mg/kg), station

3(51.87mg/kg), station 4(139.34mg/kg) and station 5(80.77) mg/kg.

Seasonal variations show that Zinc level was higher during the dry season than the rainy season. (Appendix 2)

The analysis of variance (ANOVA) result showed there were no significant difference ($p < 0.05$) in location and time ($P=0.625$).

3.7 ZINC (Zn) IN TILAPIA

The concentration of Zinc recorded in tilapia muscle/tissue is shown in fig 7. The results

indicate that Zinc level in this study ranged from 30.1 to 196mg/kg in all the stations. The mean values observed for Zinc in tilapia was station 1(40.19 mg/kg), station 2(82.29mg/kg), station 3(79.68mg/kg), station 4(62.28 mg/kg) and station 5(158.73) mg/kg.

Seasonal variations show that Zinc level was higher during the dry season than the rainy

season. Zinc level was highest in January followed by October, December, February and March. (Appendix 3)

The analysis of variance (ANOVA) result showed there were no significant difference ($p < 0.05$) in Zn level observed in tilapia muscle/tissue during the study period ($p=0.696$)

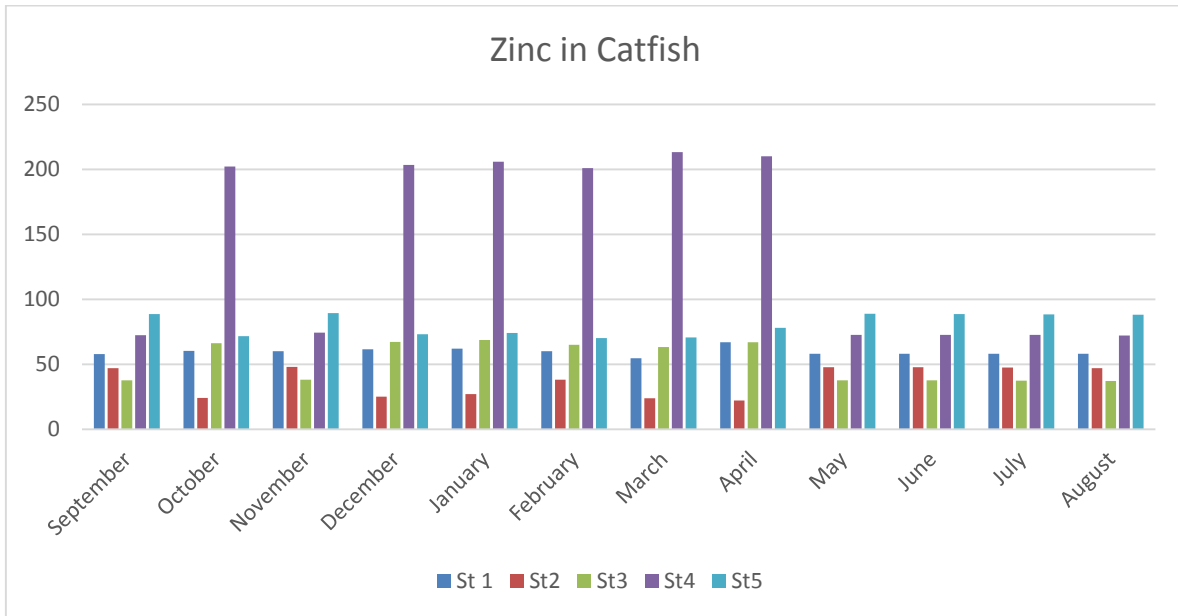


Fig. 6. Zinc (Zn) in Catfish (Mg/Kg)

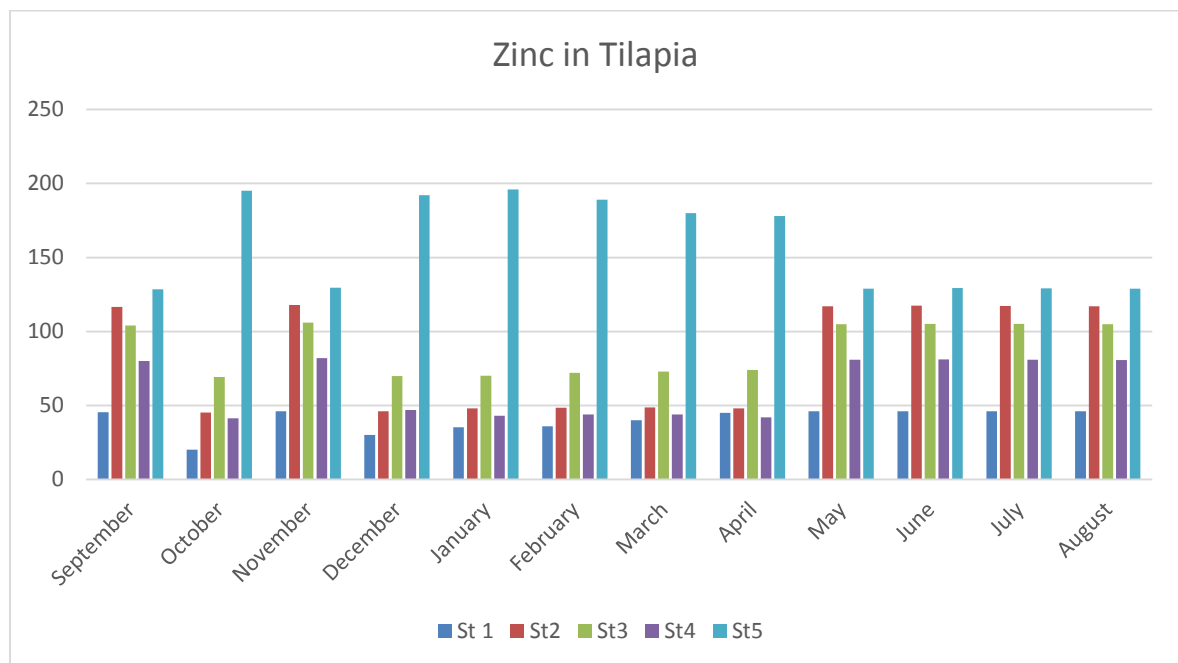


Fig. 7. Zinc (Zn) in Tilapia (Mg/Kg)

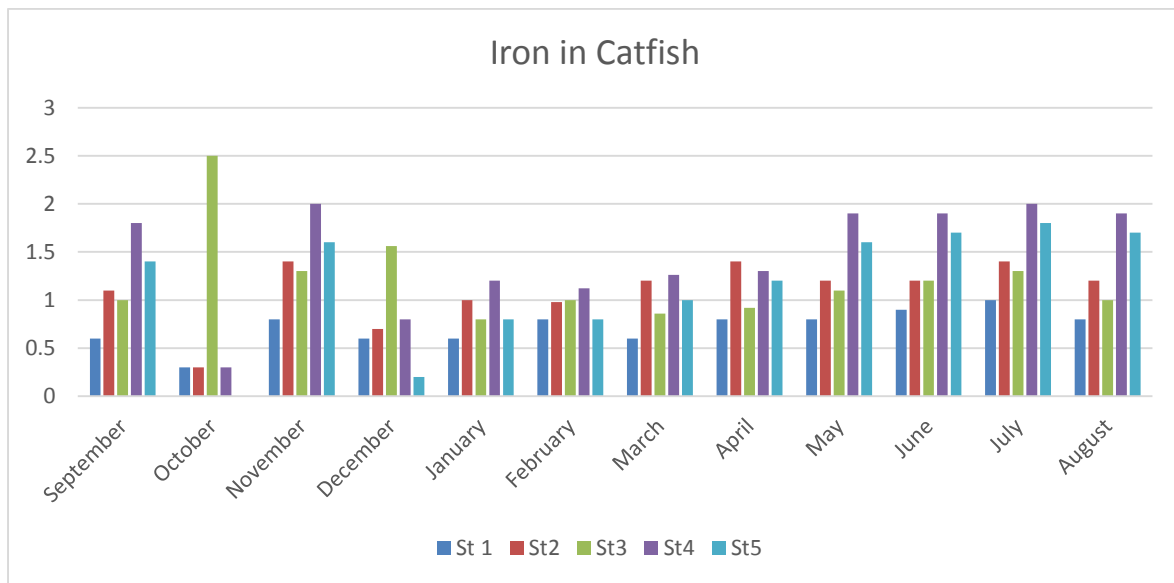


Fig. 8. Iron (Fe) in Catfish (Mg/Kg)

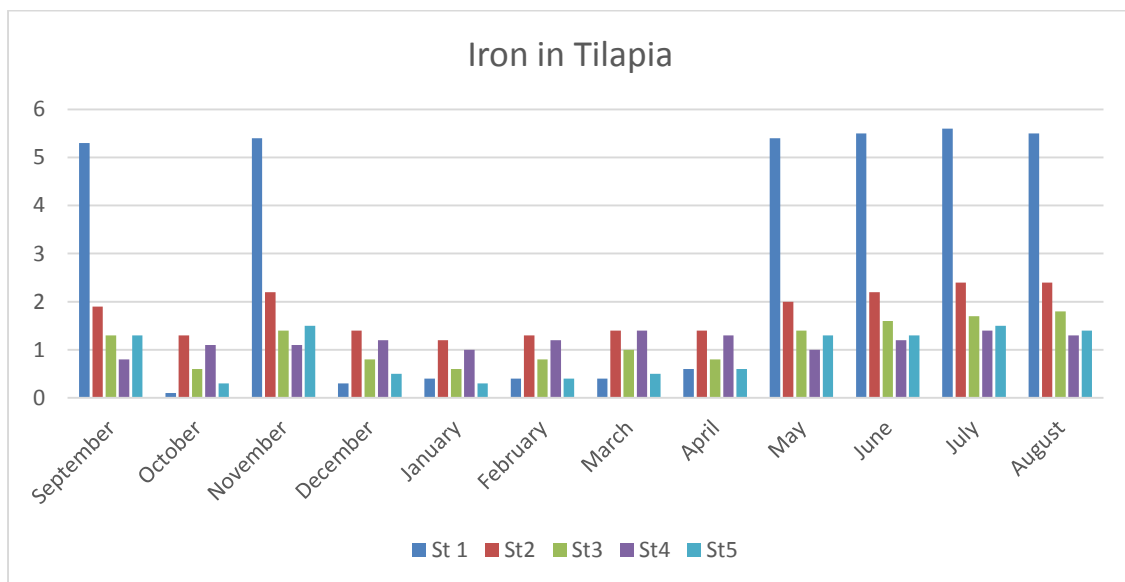


Fig. 9. Iron (Fe) in Tilapia (Mg/Kg)

3.8 Iron (Fe) in Catfish Muscle/Tissue

The concentration of Iron recorded in Catfish muscle/tissue is shown in fig 8. The results indicate that Iron level in this study ranged from < 0.02 to 2.5 mg/kg in all the stations. The mean values observed for copper was station 1(0.72 mg/kg), station 2(1.09mg/kg), station 3(1.21 mg/kg), station 4(1.46 mg/kg) and station 5(1.15 mg/kg) mg/kg.

Seasonal variations presented in Appendix 2 show that Iron level was higher during the dry season than the rainy season.

The analysis of variance (ANOVA) result showed there were significant difference ($P < 0.05$) in location and time ($P = 0.026$).

3.9 IRON (Fe) IN TILAPIA

The concentration of Iron recorded in tilapia muscle/tissue is shown in fig 9. The results indicate that Iron level in this study ranged from 0.1 to 5.6 mg/kg in all the stations. The mean values observed for Iron in tilapia was station 1(2.9 mg/kg), station 2(1.76 mg/kg), station 3(1.15 mg/kg), station 4(1.17 mg/kg) and station 5(0.91) mg/kg.

Seasonal variations show that Iron level was higher during the rainy season than the dry season. (Appendix 3). The analysis of variance (ANOVA) result showed there were significant difference ($P < 0.05$) in Iron level observed in tilapia muscle/tissue during the study period. ($P = 0.007$)

4. DISCUSSIONS

4.1 Heavy Metal Analysis of Fish Muscles/Tissue

Aquatic organisms tend to bio-accumulate heavy metals and therefore become susceptible to its effect [14].

Fishes have been used for many years to determine the pollution status of water and thus regarded as excellent biological markers of metals in aquatic ecosystem. The above statements are confirmed in this study.

The bioaccumulation of toxic levels of heavy metals are detrimental to organisms generally as they biomagnified them through the food chain and later transferred to human. Increased level of heavy metals in humans has been traced to heavy metal contamination in aquatic systems. Study of fish muscle is one of the means to investigate the amount of heavy metals entering the human body in fish [15].

Generally heavy metals detected in this study were high in the fish and proves an evidence of bioaccumulation. Both essential and non-essential heavy metals were detected in flesh of Catfish and Tilapia except Chromium and Lead that were below detection limit.

There were both spatial and seasonal variations of the heavy metals in the flesh of the two fish in all stations sampled.

The results found in Catfish and Tilapia was compared with FAO [12] FAO/WHO [16] and EEC [11] permissible limits to ascertain its level of toxicity.

4.2 Cadmium (Cd) in Catfish and Tilapia Muscle/Tissues

Cadmium was obtained in the muscle of both Catfish and Tilapia analyzed in the present study.

The results indicate range of Catfish muscle from 1.0 – 3.9mg/kg with mean levels for the various stations.

The results showed that Cadmium level in Catfish and Tilapia found in Orashi River exceeded FAO, [12] FAO/WHO [16] and EEC [11] permissible limit of 0.01 mg/kg.

Generally Cadmium detected was higher in Catfish than in Tilapia. This can be attributed to their habitat and feeding methods. Catfish are nocturnal and bottom dweller in contact with sediment while Tilapia is diurnal and surface dweller deriving its Cd contamination only from water alone.

There are both spatial and seasonal variations of Cadmium in both Catfish and Tilapia.

The analysis of variance (ANOVA) result showed that there were significant difference ($p < 0.05$) between stations and months in Cd level observed in Catfish muscle during the study period ($P = 0.015$).

ANOVA result showed there were no significant difference ($p < 0.05$) between stations and months in Cd levels observed in Tilapia muscle during the study period ($P = 0.979$).

4.3 Copper (Cu) in Catfish and Tilapia Muscle/Tissues

Copper concentration in the muscle ranged 10.9 – 33mg/kg and 17.3 – 40.6mg/kg for Catfish and Tilapia respectively analyzed in the present study.

These results are within the FAO [12] permissible limit of 30mg/kg except in station 2 for Tilapia (33.68 mg/kg) and are an indication of anthropogenic input. Copper is one of the most toxic metal to marine organisms along with Mercury and Silver, although is not often considered a threat to human health except when present in abnormally high value. It is an essential element and most animals apparently possess a well developed regulatory mechanism for this metal [17]. It is advisable to guard against the indiscriminate discharge of industrial and domestic waste into Orashi aquatic environment to avoid any possible transfer of this contaminant to aquatic biological resources that are the primary animals' protein source to the local communities.

From the result of Cu concentration in Orashi River, one can infer that the consumption of these fishes do not pose a health risk for its consumers.

There are both spatial and seasonal variations of Copper in both Catfish and Tilapia.

High values are observed for Catfish in dry season than in the rainy season while rainy season recorded higher values than dry season in the case of Tilapia. This is similar to higher Cu values reported by Ubalua et al. [17] for fishes in Aba River, Abia state, Nigeria.

This can be attributed to their habitat and feeding methods. Catfish are nocturnal and bottom dweller in contact with sediment while Tilapia is diurnal and surface dweller deriving its Cu contamination only from water alone.

The analysis of variance (ANOVA) result showed that there were no significant difference ($P < 0.05$) between stations and months in Cu level observed in catfish ($P = 0.837$) while there were significant difference ($P < 0.05$) between stations and months in Cu levels observed in Tilapia muscle during the study period ($P = 0.019$).

4.4 Zinc (Zn) in catfish and Tilapia Muscle/Tissues

Zinc concentration in the muscle ranged from 22 – 213.2mg/kg and 30.1 – 196mg/kg for catfish and Tilapia respectively analyzed in the present study.

These results were above the FAO [12] permissible limit of 30mg/kg for Zinc in seafood. This is an indication of anthropogenic input of abattoir impact from runoff, tyre ash and animal blood which is rich in Zn and Fe Agbozu et al. [4]. Zinc is an essential element in animals and human and its deficiency results in stunted growth, loss of taste and hypogonadism leading to decreased fertility [17]. Zinc toxicity is rare but at concentration up to 40mg/kg, it may induce toxicity such as irritability, muscular stiffness and pain, loss of appetite and nausea, others include severe vomiting, diarrhea, bloody urine, liver and kidney failure and anaemia Jacinta et al. [14]. There are both spatial and seasonal variations of Zinc in both Catfish and Tilapia.

High values are observed in dry season than in the rainy season for the two fish species. This is similar to higher Zinc values reported by Ubalua et al. [18] for fishes in Aba River, Abia state, Nigeria.

The analysis of variance (ANOVA) result showed that there were no significant difference ($P <$

0.05) between stations and months in Zn level observed in Catfish ($P = 0.625$) and Tilapia muscle ($P = 0.696$) during the study period.

4.5 Iron (Fe) in Catfish and Tilapia Muscle/Tissues

Iron concentration in the muscle ranged from 0.02 – 2.5mg/kg and 0.1 – 5.6mg/kg for Catfish and Tilapia respectively analyzed in the present study.

These results are within the FMENV [19] permissible limit of 3mg/kg for Iron in seafood. This is an indication of anthropogenic input of abattoir impact from runoff, tyre ash and animal blood which is rich in Zn and Fe [17]. There are both spatial and seasonal variations of Iron for both Catfish and Tilapia.

High values are observed in dry season than in the rainy season for Catfish while reverse is the case with Tilapia.

The analysis of variance (ANOVA) result showed that there was significant difference ($P < 0.05$) between stations and months in Fe level observed in Catfish ($P = 0.026$) and Tilapia muscle ($P = 0.007$) during the study period.

5. CONCLUSION

The research was intended to study heavy metal concentration as a result of the influence of human and industrial activities on the Orashi River and the two bony fish (*Clarias gariepinus* and *Tilapia nilotica*).

The results from this study have provided information on the heavy metals profile of the fish (Catfish and Tilapia) of the river.

Essential heavy metals detected in water were Copper (Cu), Zinc (Zn) and Iron(Fe) and were low when compared with international standard WHO 1984¹⁹, USEPA 2002¹⁸, FEPA 1999⁷, FMEnv 2001⁸ recommended limits of 3mgs/l. The non-essential metals detected were Cadmium (Cd) which exceed the international standard of 0.01mg/kg but do not constitute health risk. Heavy metals concentration was generally elevated at and around abattoir and gas flare sites.

6. RECOMMENDATION

This study has shown that Heavy metals accumulate over time within the aquatic

ecosystem. The aquatic resources have also been shown to be the major source of protein to the indigenous community who are exposed to the hazardous effects of these pollutants. It is therefore recommended that:

- (i) The companies operating in the area should adopt improved waste management plans to reduce the levels of the pollutants discharge in the environment. To achieve this, more stringent monitoring should be carried out by the companies and properly supervised by the regulatory bodies such as DPR, FMENV and Rivers State Ministry of Environment. Industries operating in the area should be encouraged to adopt as much as possible a zero waste management technology at all stages of a product life.
- (ii) Comparative studies in other biota of the environment would be useful in monitoring the rate and mechanism of uptake of the metals in the two fish and other food fish in Orashi River. This will provide data for informed decision on uptake of what is available in a polluted environment.
- (iii) There is need to develop management plan to ensure that petroleum hydrocarbon contamination of the area is prevented/reduced in order to achieve good water quality and avoid any possible negative health outbreak through consumption of contaminated water resources by the local communities.
- (iv) The local communities should be enlightened about the adverse effects of anthropogenic activities, oil pipeline vandalization/sabotage and bunkering activities to make money without consideration of the environmental effects.

COMPETING INTERESTS

Authors have declared that no competing interests exist.

REFERENCES

1. Federal Environmental Protection Agency. Guidelines and standards for Environmental Pollution in Nigeria., FEPA. Lagos, Nigeria; 1999.
2. Gullick RW, Grayman WM, Deininger R, Males RM. Design of early warning monitoring system of source waters. Journal of American water work Association. 2003;95:58-72.
3. Mansour SA, Sidky MM. Ecotoxicological studies 3: Heavy metals contaminating Water and fish from Fayoun Governorate, Egypt. Food Chemistry. 2002;78:15-22
4. Agbozu IE, Ekweozor IKE, Opuene K. survey of heavy metals in the catfish *Synodontis clarias*. International Journal of Environmental science and Technology. 2007;4(1):93-97
5. APHA. Standard methods for the examination of water and waste water (20th ed) Greenberg A.E and Eaton, A.D (Eds). American Public Health Association, Alexandria, American water work Association, water Environment Federation, Washington DC; 1998.
6. Asonye CC, Okolie NP, Okenwa EE, Iwuanyanwu UG Some physicochemical characteristics and Heavy metal profiles of Nigerian Rivers, Streams and water ways. African Journal of Biotechnology. 2007;6(5):617-624
7. Rashed MN. Cadmium and lead levels in fish (*Tilapia nilotica*). Tissues as biological indicator from Lake water Pollution. Environmental monitoring. 2001a;68:75-89
8. World health organization (WHO). Guidelines for drinking water quality. Geneva; 1984.
9. Tebutt THY. Principles of water quality control fourth edition. Pergamon Press, Oxford. 1992; 235.
10. United State Environment Protection Agency (USEPA). Current drinking water standards. Office of Groundwater and Drinking water, Government printing office, Washington. 2002;19:162-166.
11. European Economic Commission (EEC). Commission Regulation (EC) No.78/2005 (pp. L16/43El 16/45) Official journal of European Union; 2005.
12. FAO. Compilation of legal limits for hazardous substances in fish and fishery products. FAO Fishery Circular No 464. Food and Agriculture Organization. 1983;5-100
13. Rainbow PS. Trace metal bioaccumulation models, metabolic availability and Toxicity. Environmental International. 2007;33:576-582
14. Jacinta, OA, Okwodu NE. Environmental Health Determination and Assessment of Physicochemical characteristics of Oloshi Rivers in Nigeria. FUW Trends in Sciences

- and Technology Journal. 2017;2(18):585-590
www.firstjournal.com e-ISSN: 24085162;p-ISSN:20485170.
15. Obodo GA. Toxic Metals in the River Niger and its tributaries. Journal of Indian Association for environmental Management. 2001;28:147-151.
 16. FAO//WHO. Evaluation of certain food additives and the contaminant mercury, lead and cadmium; WHO Technical Report series. 1989;505.
 17. Kalulu SE, Osibanjo O, Ajayi SO. Trace metal content of fish and shell fishes of the Niger Delta of Nigeria. Environmental Interest. 1987;13:247-251
 18. Ubalua AO, Chijioke UC, Ezeronye OU. Determination and Assessment of heavy metal content in fish and shell fish in Aba. River, Abia State, Nigeria. Science Technology Journal. 2007; 7(1):16-23.
 19. FMEnv. National Guidelines and standard for waste water quality in Nigeria. FMEnv. Lagos Nigeria; 2001.

APPENDIX 1: RAW DATA OF HEAVY METALS OBTAINED IN FISHES SAMPLES**(a) Cadmium in Catfish(Mg/Kg)**

CD	SEPT	OCT	NOV	DEC	JAN	FEB	MAR	APR	MAY	JUNE	JULY	AUG
St 1	2.4	3.1	2.4	32.2	23.3	33	3.34	3.34	2.5	3.3	3.4	3.2
St 2	2.5	3.8	2.6	26.8	28.4	27	3.86	3.9	2.6	3.9	3.9	3.7
St 3	2.7	2.8	2.8	10.9	24.3	12	3.2	3.2	2.8	2.9	3	2.8
St 4	1.5	3.4	1.6	28.1	24	28.4	3.8	3.8	1.6	3.5	3.5	3.3
St 5	1.9	0.9	2	15.1	20.9	15.8	3.2	3.2	2	1.2	1.4	1.5

(b) Cadmium in Tilapia(Mg/Kg)

Cd	SEPT	OCT	NOV	DEC	JAN	FEB	MAR	APR	MAY	JUN	JULY	AUG
St 1	2.4	2.5	2.6	2.6	2.6	2.6	2.7	2.8	2.4	2.3	2.6	2.6
St 2	3.8	2.8	4.1	2.8	2.8	2.9	2.9	3	3.8	3.6	4	4.2
St 3	0.1	2.3	0.3	2.4	1.2	1.2	1.3	1.4	0.1	0.2	0.6	0.7
St 4	3.1	1.8	3.3	2	2.4	2.4	2.6	2.7	3.1	3.3	3.4	3.5
St 5	1.3	3.1	1.5	3.4	3.6	3.6	3.6	3.1	1.3	1.5	1.5	1.6

(c) Copper in Catfish(Mg/Kg)

Cu	SEPT	OCT	NOV	DEC	JAN	FEB	MAR	APR	MAY	JUNE	JULY	AUG
St 1	32	23.3	33	24	26	26.2	26.4	26.4	32.4	32.5	32.6	32.3
St 2	27	28.4	27	28.8	29	29.4	29.8	30.2	27	27.4	27.7	27.2
St 3	11	24.3	12	24.6	25	25	25.2	25.2	11	11.6	11.8	11.6
St 4	28	24	28.4	24.4	25.2	25.4	25.4	25.5	28.2	28.2	28.2	28
St 5	15	20.9	15.8	21.2	23.2	23.6	24	24.2	15.2	15.3	15.5	15

(d) Copper in Tilapia(Mg/Kg)

Cu	SEPT	OCT	NOV	DEC	JAN	FEB	MAR	APR	MAY	JUNE	JULY	AUG
St 1	40.2	29.6	40.6	30	30	30	30.2	30.4	40.2	40.2	40.3	40
St2	37.9	29.2	38	29.6	29.8	29.8	29.8	30	37.6	37.6	37.6	37.2
St3	38	17.3	38.2	17.8	18	18.2	18.4	18.6	38	38.4	38.5	38
St4	28.4	24	28.6	25	26	26.4	26.6	26.4	29	29.2	29.3	29
St5	21.3	28.2	22	28.6	28.8	28.8	29	29.2	21	22	22.1	22.1

(e) Zinc in Catfish(Mg/Kg)

Zn	SEPT	OCT	NOV	DEC	JAN	FEB	MAR	APR	MAY	JUNE	JULY	AUG
St 1	58	60.2	60	61.4	62	60	54.5	67	58	58.1	58.1	58
St2	47	24	48	25	27	38	23.7	22	47.6	47.6	47.5	47
St3	38	66.2	38	67.2	68.6	65	63.3	66.8	37.6	37.7	37.4	37
St4	72	202.2	74.2	203	206	201	213.2	210	72.5	72.6	72.5	72.2
St5	89	71.6	89.4	73	74	70	70.6	78	88.8	88.6	88.4	88.2

(f) Zinc in Tilapia(Mg/Kg)

ZN	SEPT	OCT	NOV	DEC	JAN	FEB	MAR	APR	MAY	JUNE	JULY	AUG
St 1	45.5	20.1	46	30.1	35.2	36	40	45	46	46.2	46.2	46
St2	116.6	45.3	118	46	48	48.4	48.6	48	117	117	117	117
St3	104.1	69.3	106	69.8	70.2	72	73	74	105	105	105	105
St4	80	41.3	82	47	43	44	44	42	81	81.2	81	80.8
St5	128.5	195	130	192	196	189	180	178	129	129	129	129

(g) Iron in Catfish(Mg/Kg)

Fe	SEPT	OCT	NOV	DEC	JAN	FEB	MAR	APR	MAY	JUN	JULY	AUG
St 1	0.6	0.3	0.8	0.6	0.6	0.8	0.6	0.8	0.8	0.9	1	0.8
St2	1.1	0.3	1.4	0.7	1	0.98	1.2	1.4	1.2	1.2	1.4	1.2
St3	1	2.5	1.3	1.56	0.8	1	0.86	0.92	1.1	1.2	1.3	1
St4	1.8	0.3	2	0.8	1.2	1.12	1.26	1.3	1.9	1.9	2	1.9
St5	1.4	0	1.6	0.2	0.8	0.8	1	1.2	1.6	1.7	1.8	1.7

(h) Iron in Tilapia(Mg/Kg)

Fe	SEPT	OCT	NOV	DEC	JAN	FEB	MAR	APR	MAY	JUN	JULY	AUG
St 1	5.3	0.1	5.4	0.3	0.4	0.4	0.4	0.6	5.4	5.5	5.6	5.5
St2	1.9	1.3	2.2	1.4	1.2	1.3	1.4	1.4	2	2.2	2.4	2.4
St3	1.3	0.6	1.4	0.8	0.6	0.8	1	0.8	1.4	1.6	1.7	1.8
St4	0.8	1.1	1.1	1.2	1	1.2	1.4	1.3	1	1.2	1.4	1.3
St5	1.3	0.3	1.5	0.5	0.3	0.4	0.5	0.6	1.3	1.3	1.5	1.4

APPENDIX 2. SEASONAL VARIATION IN HEAVY METAL CONCENTRATION IN CATFISH

Heavy Metal (Mg/Kg)	DRY SEASON							RAINY SEASON						
	OCT	NOV	DEC	JAN	FEB	MAR	\bar{x} con	APR	MAY	JUN	JUL	AUG	SEP	\bar{x} con
Cd	2.8	2.28	2.26	2.42	2.32	3.5	2.59	3.49	2.3	2.96	3.04	2.9	2.2	2.81
Cu	24.2	23.2	24.6	25.7	25.9	66.2	31.6	26.3	22.8	23	23.2	22.8	22.6	23.44
Zn	84.8	61.9	85.9	87.5	86.8	29.8	72.8	86.8	60.9	60.9	60.8	60.5	60.8	65.44
Fe	0.68	1.42	0.77	0.88	0.94	0.98	0.95	1.52	1.32	1.38	1.9	1.32	1.18	1.44

APPENDIX 3. SEASONAL VARIATION IN HEAVY METAL CONCENTRATION IN TILAPIA

Heavy Metal (Mg/Kg)	DRY SEASON							RAINY SEASON						
	OCT	NOV	DEC	JAN	FEB	MAR	\bar{x} conc.	APR	MAY	JUN	JUL	AUG	SEPT	\bar{x} con
Cd	2.5	2.36	2.64	2.52	2.54	2.62	2.09	2.6	2.14	2.18	1.7	2.12	2.14	2.15
Cu	25.2	33.5	26.2	26.5	26.6	26.8	27.6	26.9	33.2	33.5	33.6	33.3	33.2	32.3
Zn	74.2	96.4	77	78.5	77.9	77.1	80.2	77.4	05.6	95.7	75.6	05.6	94.9	92.5
Fe	0.68	2.32	0.84	0.7	0.82	0.94	1.05	0.94	2.22	2.36	2.52	2.48	2.12	2.1

© 2021 Okwodu et al.; This is an Open Access article distributed under the terms of the Creative Commons Attribution License (<http://creativecommons.org/licenses/by/4.0>), which permits unrestricted use, distribution, and reproduction in any medium, provided the original work is properly cited.

Peer-review history:
 The peer review history for this paper can be accessed here:
<https://www.sdiarticle5.com/review-history/77647>